

Bergami Hall Triple Layout Guide

Dear Triple Resident,

Welcome to UNH and the beginning of an amazing year of new friends, enhanced learning, and different social experiences and above all else, triple the fun. Living in a triple can present some challenges to Room Set-up. This guide can serve as a resource to a possible room lay-out that works. And don't just go with the guide, try using it as a tool to truly personalize your space! We hope you find it useful!

-TAP (Triple Advisory Program)

Bed: 7' ¼" x 3' 2"

Closet: 2' x 2' 1"

Desk: 3' 6¼" x 2'

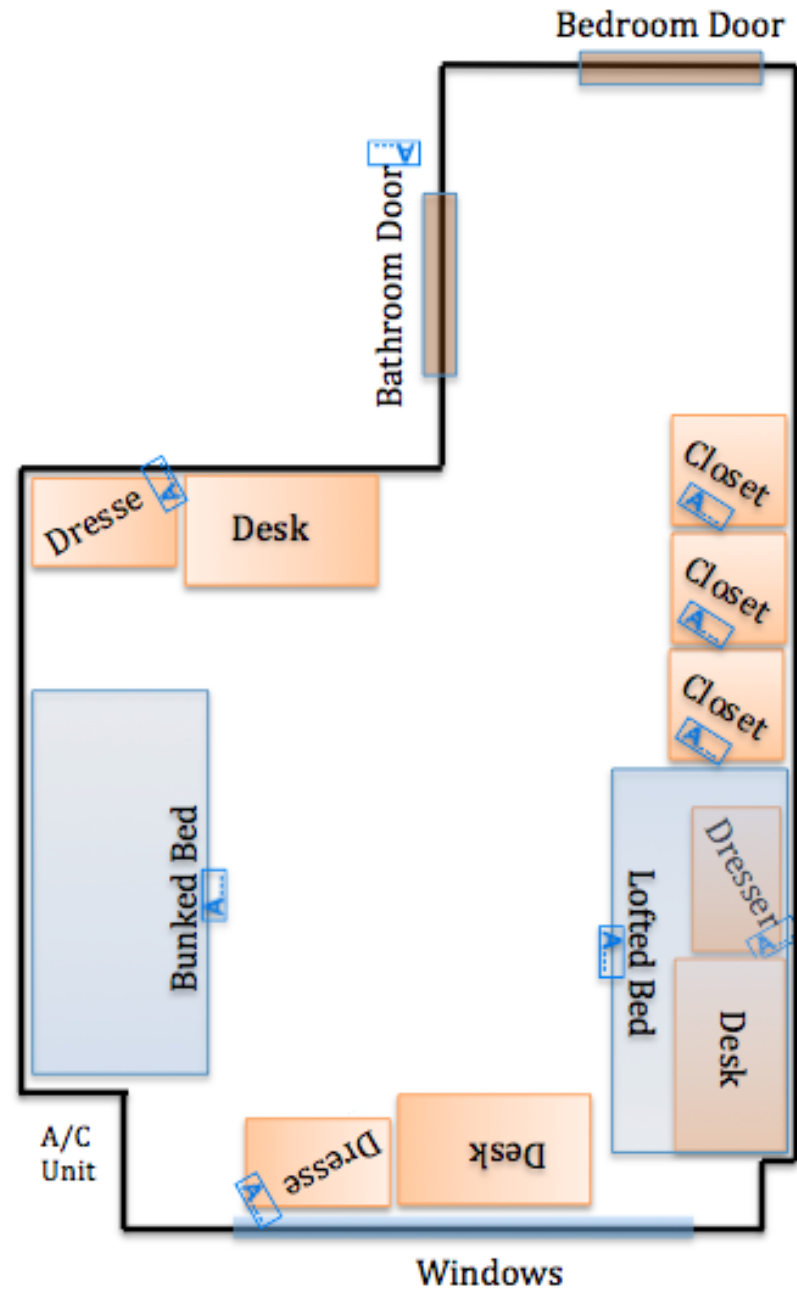
Dresser: 2' 7½" x 1' 7"

❖ Side Notes!

- ❖ Ethernet jacks are located on the left and right wall however cable jacks are only on one side. Purchasing a long cord will enable you to put a TV virtually anywhere.
- ❖ Try not to block access to the A/C panel
- ❖ The diagram for the most part is drawn to scale, however, the picture on the left gives you a great idea of how the layout will look.

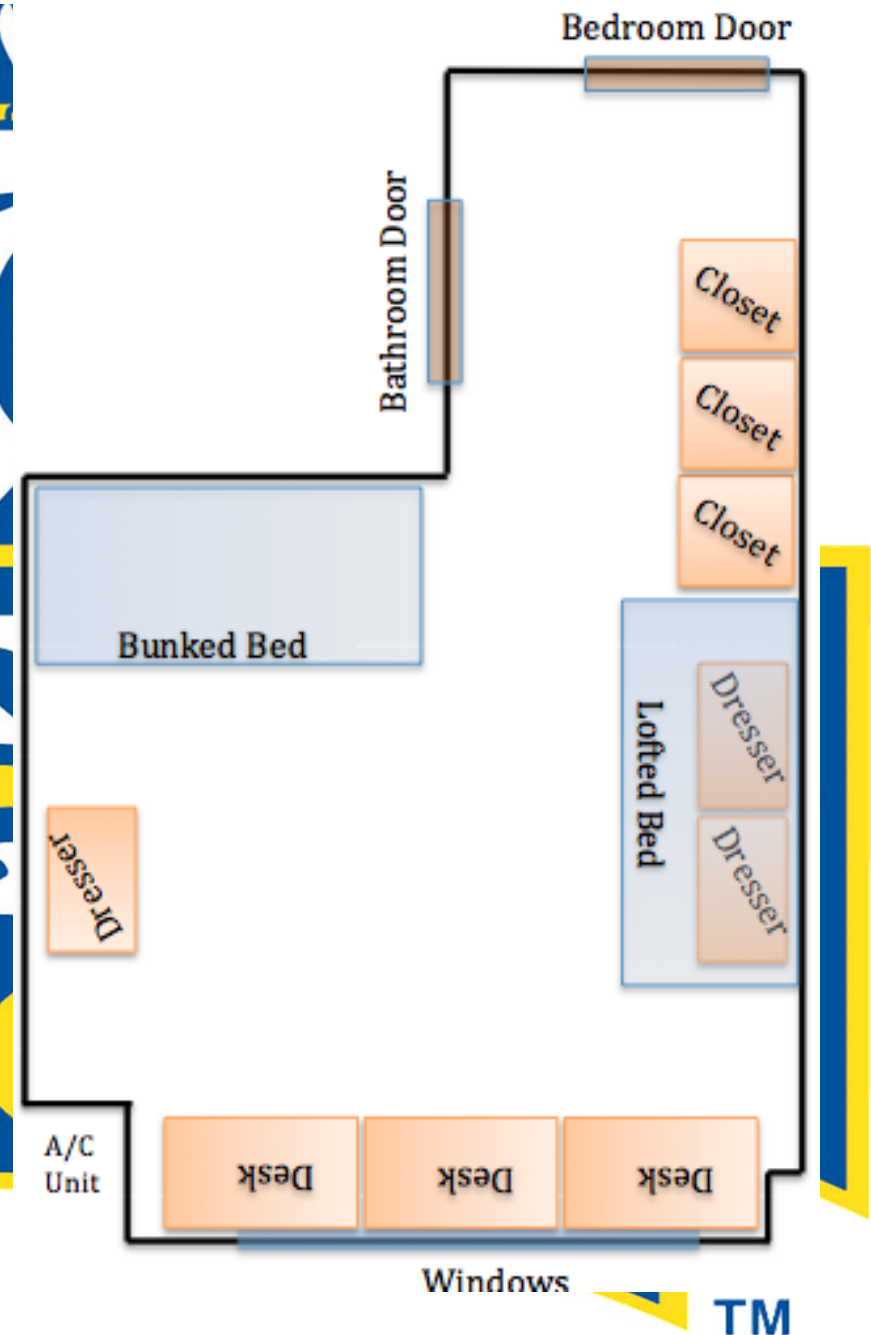
Layout 1

- Most Rooms in Bergmi Hall are already set up like this when you move in. It's a great set up for establishing 3 distinct areas for studying.



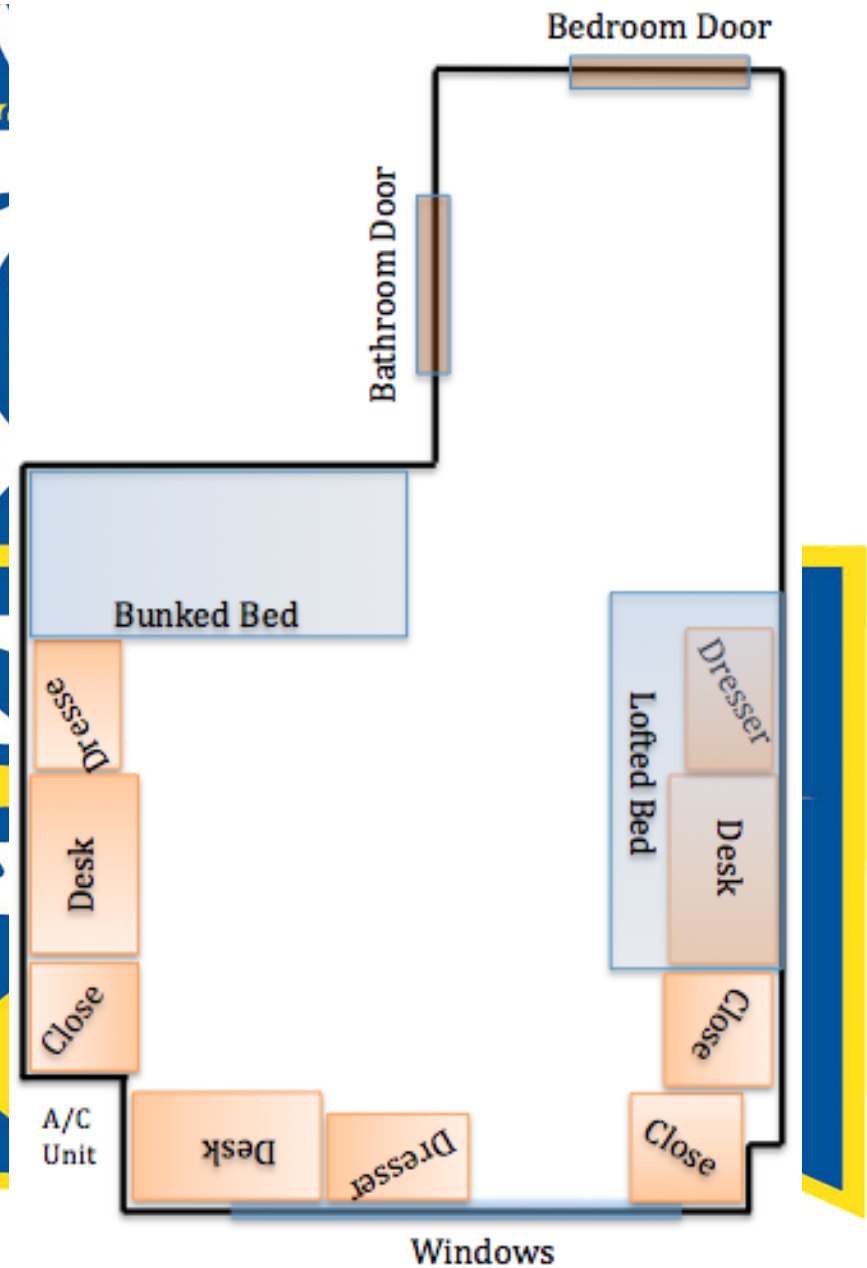
Layout 2

- This layout is great for entertainment. The dresser against the wall is located right where the cable jack is so the dresser would be a great place to put a television.



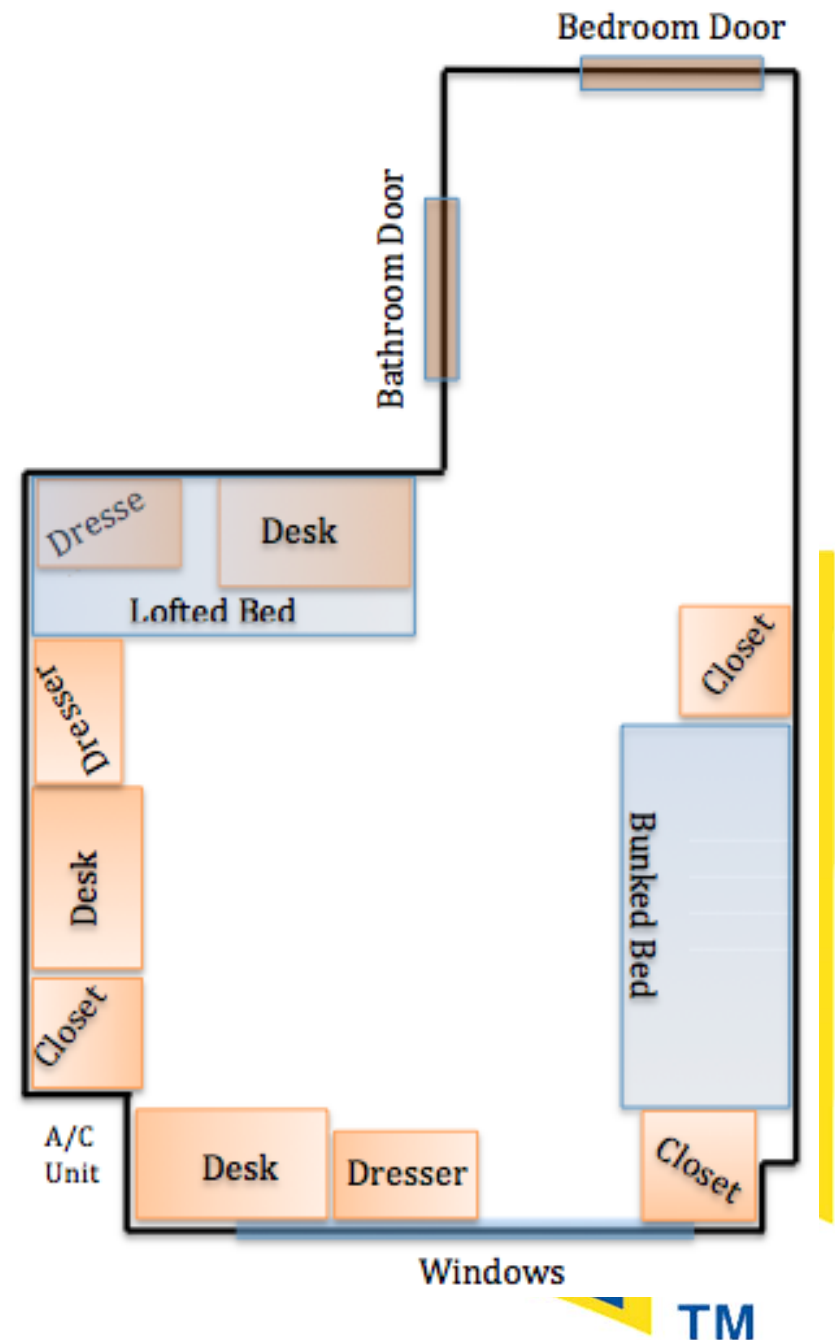
Layout 3

- It might look kind of cramped, however this set up is very cozy for three people. There is plenty of open floor space and the hallway leading to the doors is clear.



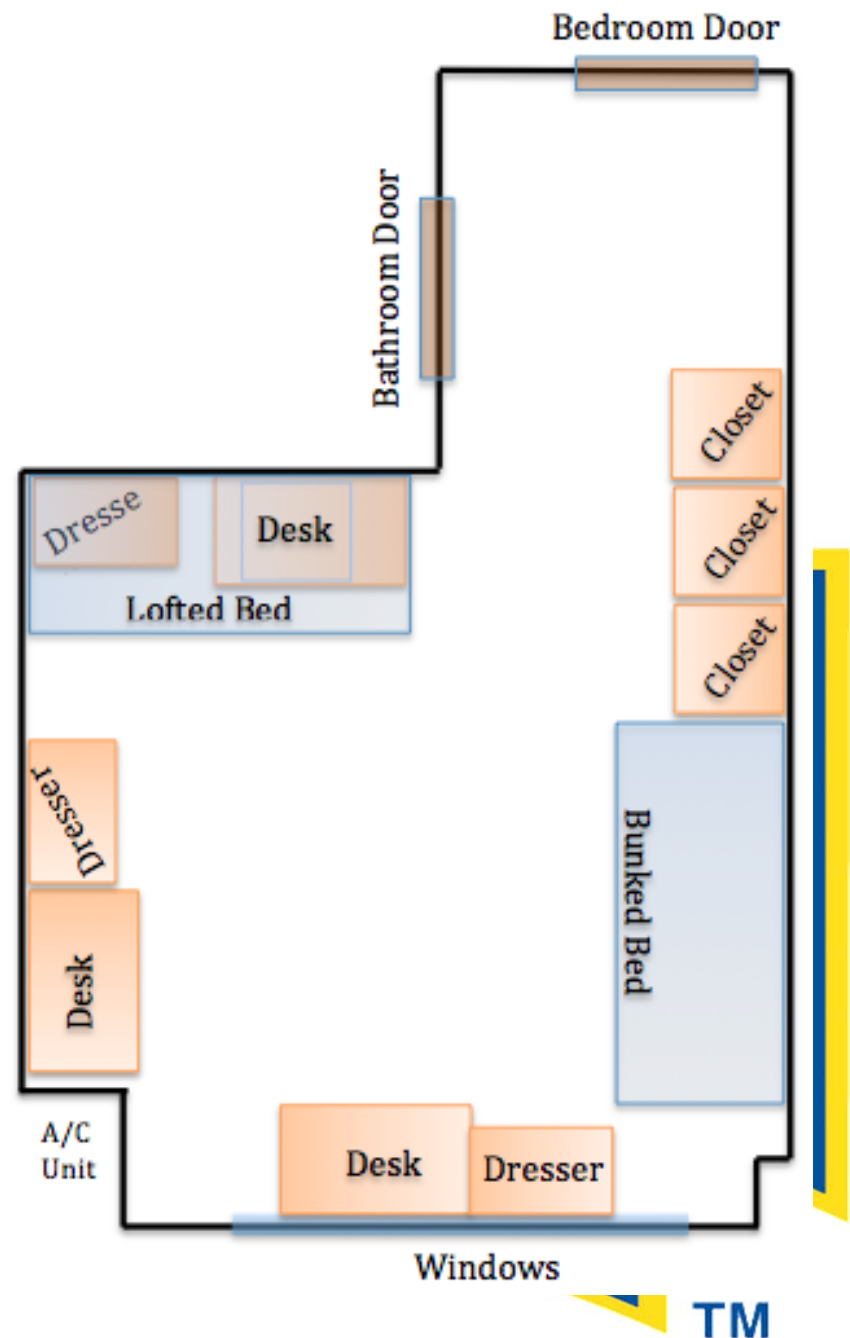
Layout 4

- This layout is very similar to the previous layout except the beds are switched and a closet is moved. This setup also allows for three distinct areas of the room, great for separation.



Layout 5

- Leaving the closets in the hallway section of the room is a great way to save space for the middle. Also, it allows for a television to be placed up there which is great for saving space on top of the desks and dressers



Layout 6

- This layout is also good for entertainment because once again, there is a dresser placed near the cable jack on the side of the room with the A/C Unit. Great for everyone to be watching TV, or movies, or playing video games at once.

