

# ***Juvenile Justice Policy and Oversight Committee***

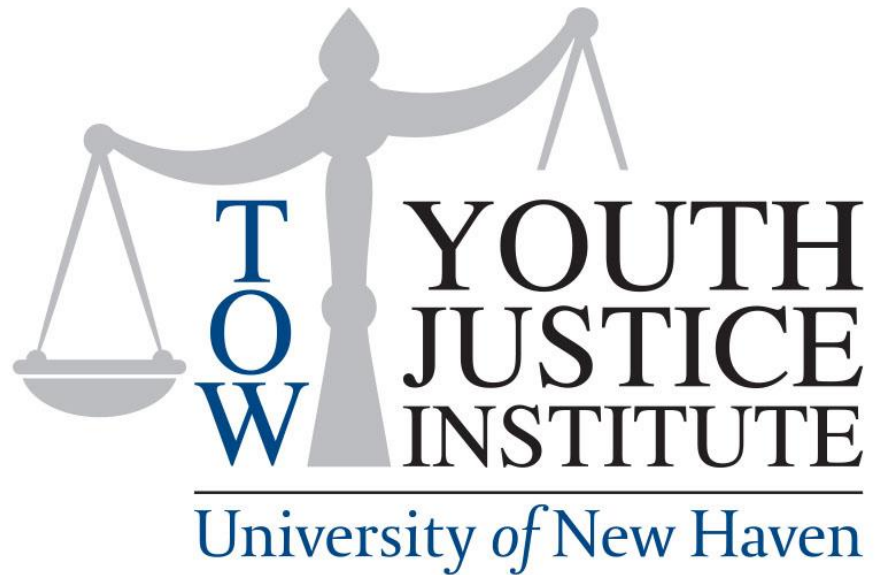
***May 16<sup>th</sup>, 2019***

***Legislative Office Building***

***2pm Room 1E***

# Progress Report

- Update: Judiciary Committee Bill #7389 - *Implementing the Recommendations of the Juvenile Justice Policy and Oversight Committee*
- Introduction of new TYJI Staff/JJPOC Members
- JJPOC Upcoming Events (Invitations included in folders)
  - CSG Site Visit: June 11<sup>th</sup>-June 13<sup>th</sup> 2019
  - Kickoff Event for Youth/Family Voice: following the June 20<sup>th</sup> JJPOC meeting
- Update: Definition of Solitary Confinement
- Presentation: Recommendations and Findings from the Study of Community-Based Programs and Services
- Update: 2019 Work Plan for JJPOC Work Groups



***Presentation:***  
***Recommendations and  
Findings from the Study of  
Community-Based Programs  
and Services***  
***Dr. Danielle Cooper***

# Purpose of Study

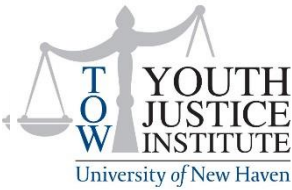
Overall, the purpose of this study is to address the legislative mandates pursuant to:

- **Public Act 14-217**, which called for an *assessment of the system of community-based services for children and youths who are under supervision*
- **Public Act 07-04**, which called for *raising the maximum age of the juvenile court jurisdiction from 15 to 17 years old*.

Delinquent Youth (n=2493; *excluding status offenses*) included in study were:

- Supervised under juvenile probation (*for the first time*)
  - Non-judicial supervision (n=886; 35.5%)
  - Judicial probation (n=1607; 64.5%)
- Received community-based programs and services
- Never received out-of-home placement

# Research Questions Addressed



1. What are commonly used community-based programs for youth under supervision?
2. What needs are the programs being implemented designed to meet?
3. How has attendance of those programs varied before, during, and after RtA?
4. What is the overlap between program eligibility and program selection?
5. How have program outcomes varied before, during, and after RtA?

# Focus of Discussion



- Relevant Findings from Stage Agency Data (2005-2015)
- Relevant Findings from Focus Groups with Key Stakeholders (2017)
  - Juvenile Probation Officers and Supervisors
  - Programs and Services Staff responsible for contract oversight
  - Service Providers for programs serving youth on probation
  - Legal Advocates serving youth on probation
- Conclusion and Recommendations to JJPOC

# Information/Data Reviewed:



- Most commonly used interventions for youth under supervision
- Characteristics about the youth
- Additional analyses of justice outcomes:
  - Length of supervision
  - Rearrests after 12 months
- Feedback from Practitioners working with youth

# Most commonly used community-based interventions for youth under supervision

Full Name	Model Type	JRRC	YES	CYFSC	FSC
Multi-Systemic Therapy	In-Home Therapy				
Brief Strategic Family Therapy	In-Home Therapy	✓	✓		
Aggression Replacement Training	Group Intervention within a Larger Program	✓	✓	✓	✓
Trauma Affect Regulation: Guide for Education and Therapy	Group Intervention within a Larger Program	✓	✓	✓	✓
Intensive In-Home Child & Adolescent Psychiatric Services	In-Home Therapy				
Voices	Group Intervention within a Larger Program	✓	✓	✓	✓
Motivational Enhancement Therapy & Cognitive-Behavioral Therapy	Group Intervention within a Larger Program	✓	✓	✓	✓
Viewpoints (SPST)	Group Intervention within a Larger Program	✓	✓		



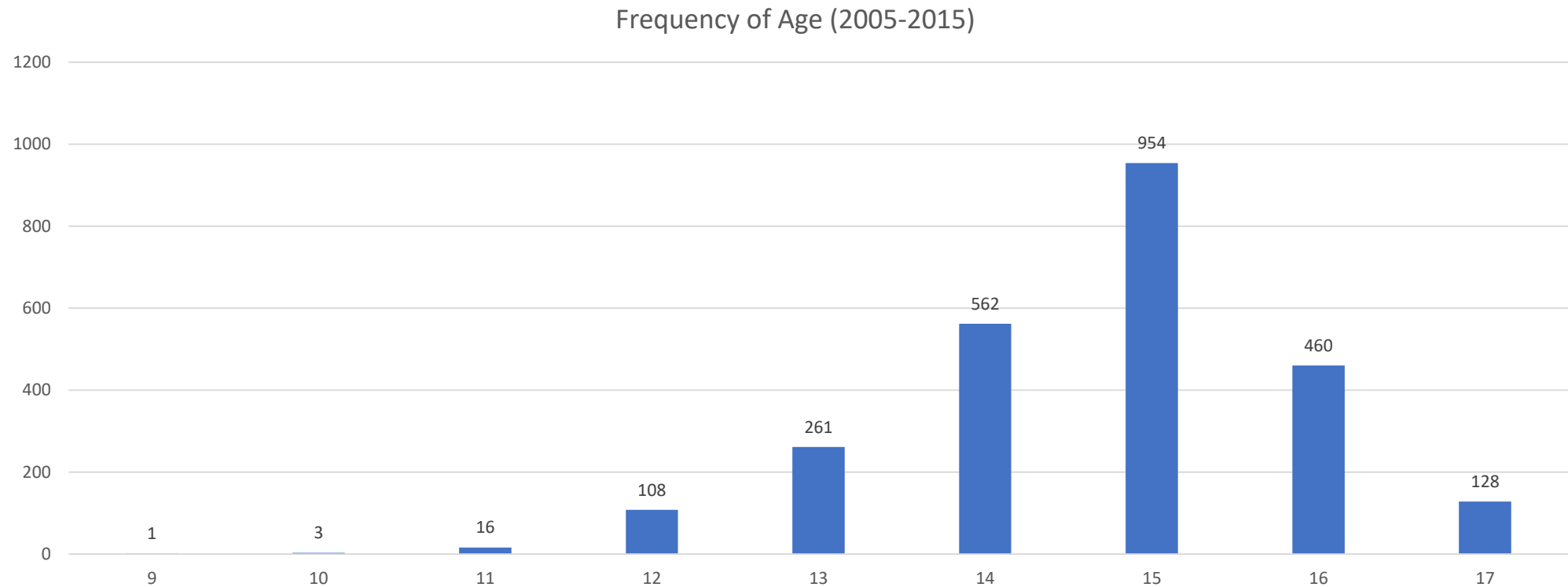
# Relevant Findings from Data



- Program Attendance/Completion:
  - Top 8 Interventions:
    - 76.1% of youth received services from the top 8 interventions identified
    - 78.6% of youth are recorded as having completed services.
  - Group Interventions in the Top 8:
    - 44.6% of youth received services from the group interventions identified
    - 84% of youth are recorded as having completed services.
  - Home interventions in the Top 8:
    - 31.5% of youth received services from the home interventions identified
    - 70.8% of youth are recorded as having completed services.

# Relevant Findings from Data

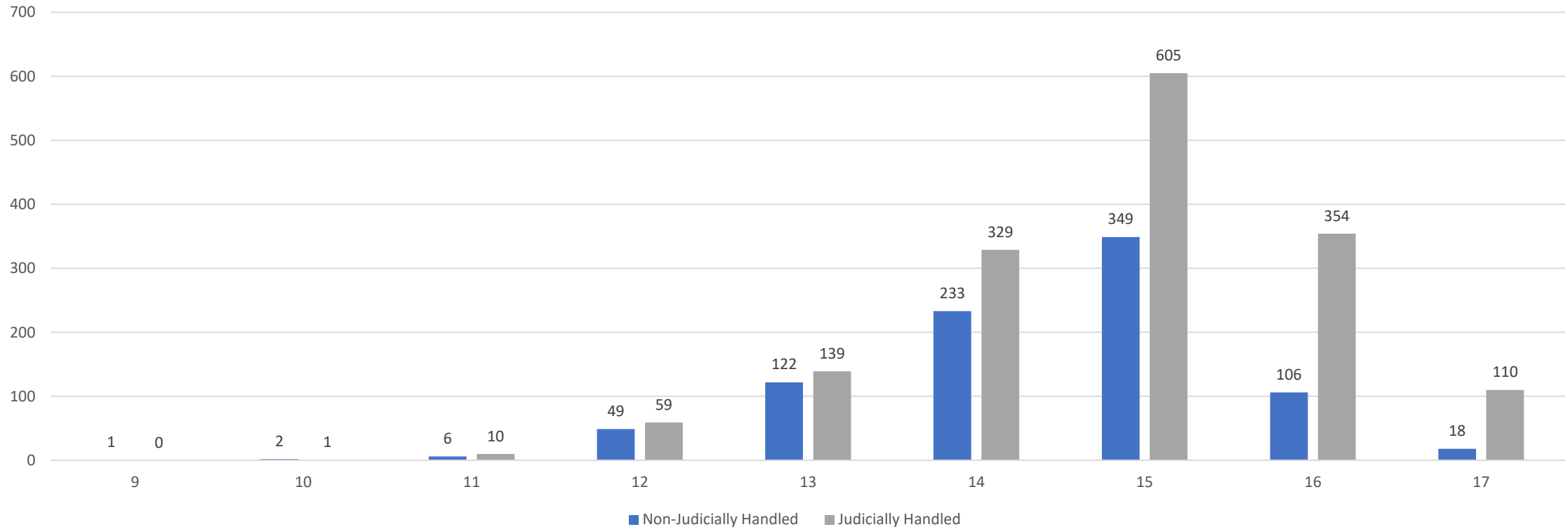
- **Most commonly youth under supervision who received services were:**
  - **15 years old across all periods (pre, during, and post-RTA)**



# Relevant Findings from Data

- **Most commonly youth under supervision who received services were:**
  - **Judicially handled across all periods (pre, during, and post-RTA)**

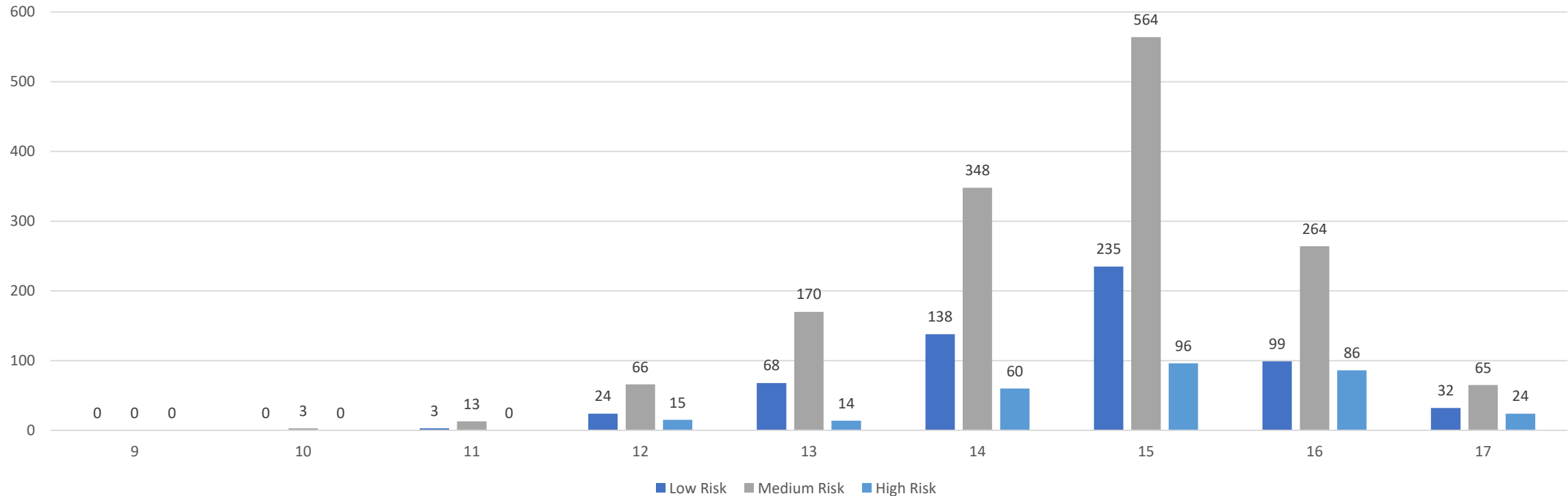
Frequency of Age by Handling Decision (2005-2015)



# Relevant Findings from Data

- **Most commonly youth under supervision who received services were:**
  - **Had a Medium Risk Level for all periods (pre, during, and post-RTA)**

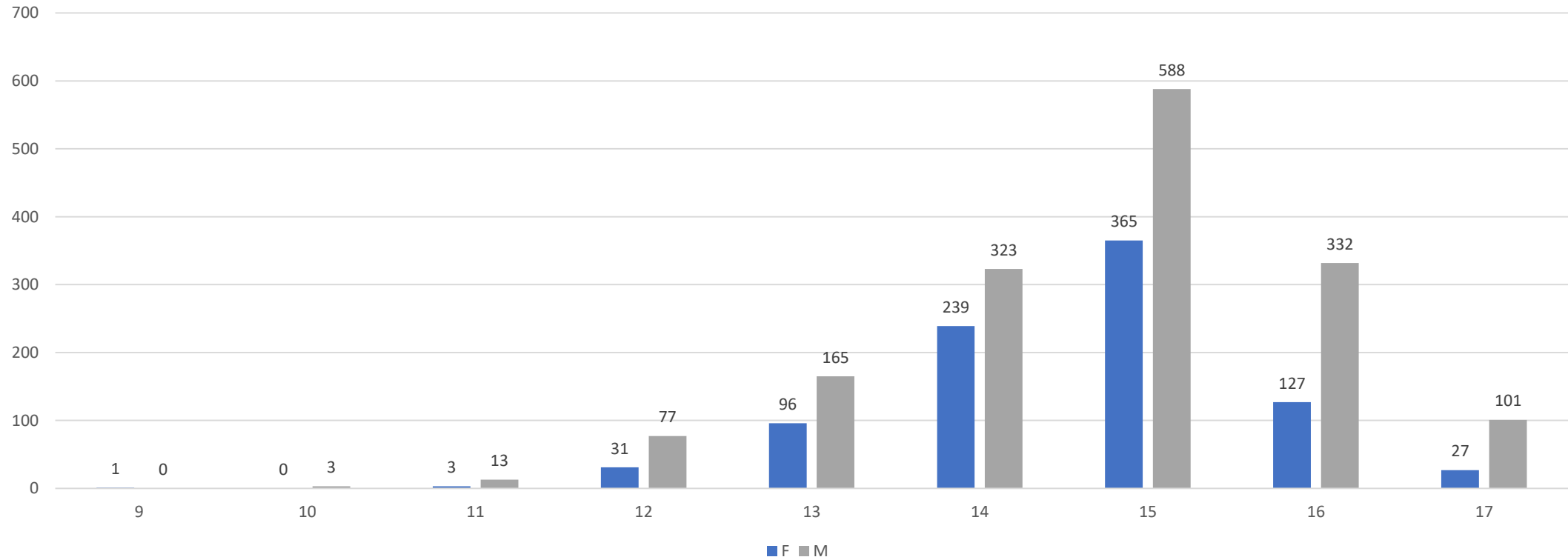
Frequency of Age by JAG Risk Level (2005-2015)



# Relevant Findings from Data

- **Most commonly youth under supervision who received services were:**
  - **Male across all periods (pre, during, and post-RTA)**

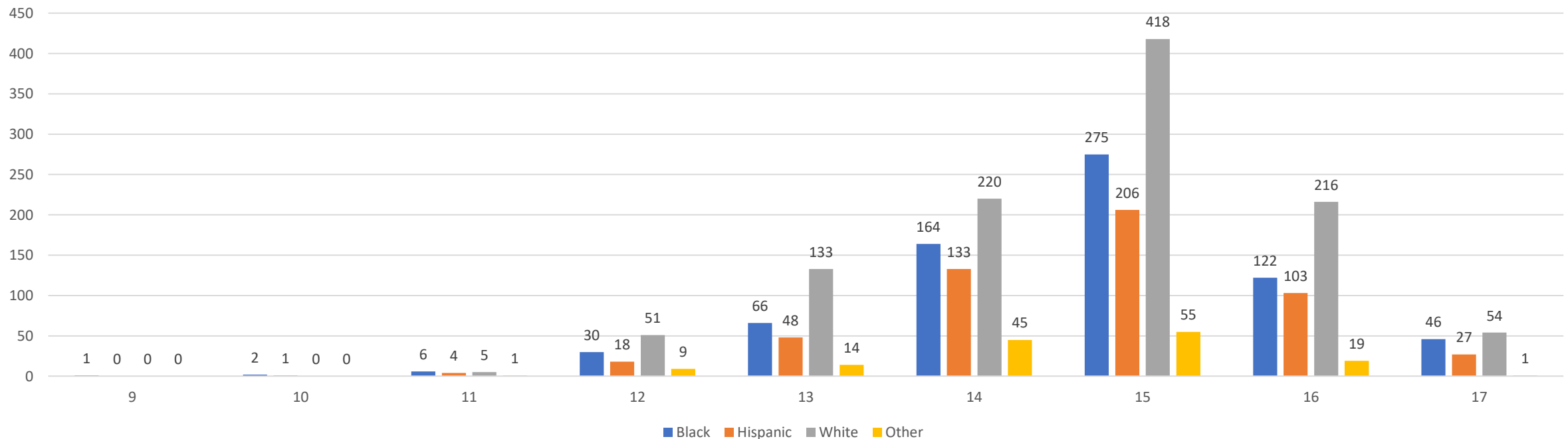
Frequency of Age by Gender (2005-2015)



# Relevant Findings from Data

- **Most commonly youth under supervision who received services were:**
  - **White across all time periods (pre, during, and post-RTA)**
  - **However, the proportion of Hispanic youth went down and the proportion of Black youth went up.**

Frequency of Age by Race (2005-2015)



# Relevant Findings from Data



- **Most commonly youth under supervision who received services were:**
  - Residing and offending in the same region (87.4%)
    - Greater New Haven is highest for offense and residence for pre and during-RTA
    - Housatonic River Valley is the highest for offense and residence post-RTA
  - Receiving 181-184 days of supervision (52.4%)
    - The average number of days for Low Risk youth decreased from pre-RTA (205) to post-RTA (183)
    - The average number of days for Medium Risk youth decreased from pre-RTA (191) to post-RTA (189)
    - The average number of days for High Risk youth decreased from pre-RTA (215) to post-RTA (187)
  - Not rearrested for any new offense within 12 months (82%)
    - The rearrests of non-judicially handled youth increased pre-RTA (18.2%) to post-RTA (19.9%)
    - The rearrests of judicially handled youth increased pre-RTA (11.5%) to post-RTA (25.6%)
    - There are fewer rearrests post-RTA in total, but smaller samples sizes lead to higher percentages

# Feedback from Practitioners



When asked about addressing youth's needs, the following were discussed:

- Working with youths' probation officers, service providers, and families
- The Juvenile Assessment Generic (JAG), Clinical assessments, Trauma screens, and School Records

When asked about the overlap between program eligibility and program selection, the following were discussed:

- Programs are selected based on their ability to address youths' criminogenic needs
- Probation officers identify appropriate programs and services for their clients under supervision



# Feedback from Practitioners

When asked about issues or concern, the following were discussed:

- Use of data collected and impact on services implemented
- Definitions for successful program completion
- Awareness of impact on youth post-service delivery period
- Wait list for services

When asked to provide advice, the following were discussed:

- Increased inter-agency data sharing
- Increased family involvement
- Increased use of flex funds
- Increased opportunities for cultural competency training
- Follow up information provided for youth served

# Conclusions



- Justice outcomes post-RTA are the same or better than they were pre-RTA.
- The system of programs and services available to youth under supervision has changed substantially over the past decade.
  - Data collection about programs has improved and new data systems have been implemented.
- Evaluation is required to say that youth who receive a certain program have better outcomes than youth who did not.
  - This requires a program-specific approach and prospective planning for proper data collection and analysis to be possible
- Retrospective data on programs that have already been modified and improved over time makes it difficult to offer additional recommendations.

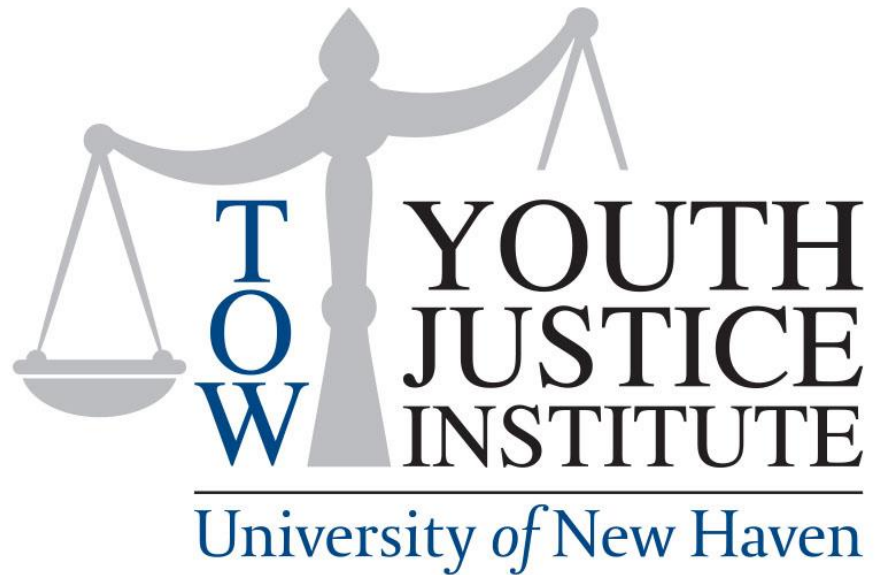
# Recommendations for JJPOC



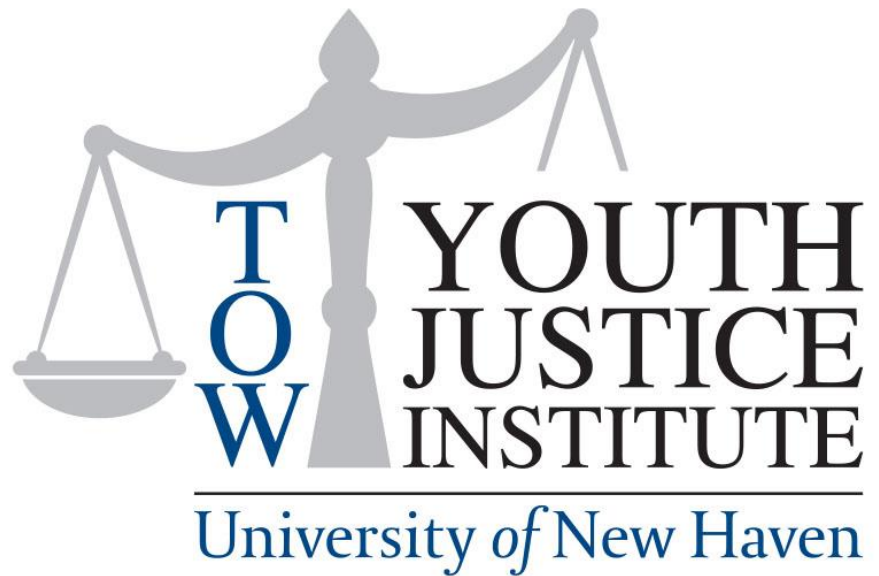
- Two unaddressed research questions:
  6. What program features are associated with successful program outcomes?
  7. Are the fulfillment of program-specific outcomes associated with successful program outcomes?
- The model for programming has changed significantly over the past decade. In order to assess the role program features have on successful program outcomes, specific programs should be identified and data collection/analysis should proceed strategically.
  - Within each program, there are specific outcomes beyond completion and future system involvement. This data is most likely captured at the provider level and researchers should coordinate with service providers to conduct more evaluative studies.

# Final Thoughts?





***DOC Update on Progress  
made following Release of  
the Child Advocate's Report  
By: Dr. Burns & Dr. Scudder***



## ***2019 Work Plan for JJPOC Work Groups***

# Incarceration Work Group

## 2019 Work Plan



- Exploratory Study of Removal of Youth from MYI/YCI with Technical Assistance from the Center for Children's Law & Policy
- Definition on Room Confinement
- Create a Youth in Custody Bill of Rights
- Increase Family Access and Knowledge of Ombudsman/Woman

# Racial & Ethnic Disparity Work Group 2019 Work Plan



- Obtaining Information for Better Understanding of Decision Making Points in the System.
- Presentations:
  - Police Data System
  - Prosecutor's Office New Case Management Data System
  - Commission on Racial & Ethnic Disparities
  - YSBs/JRBs
- Guidance from Center for Children's Law & Policy



# Diversion Work Group 2019 Work Plan

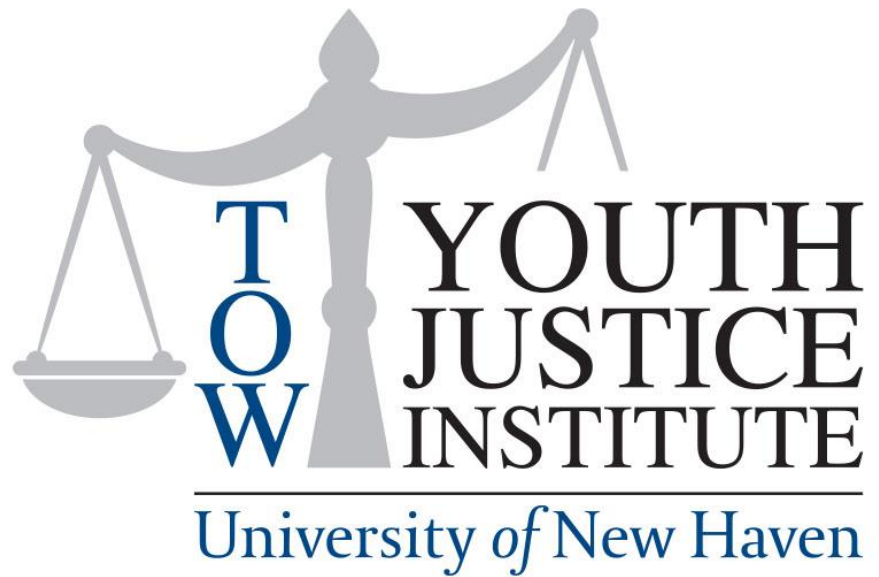


- Planning for remove of the FWSNs out of Juvenile Court Jurisdiction
- Right Size the System
  - Raise the Lower Age
- Refining the Community Response to Truancy/Defiance of School Rules

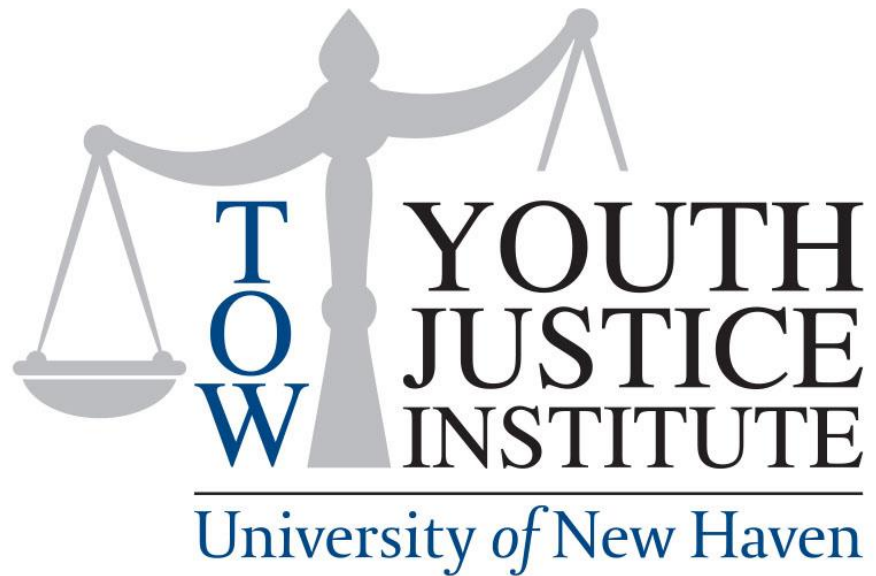
# Cross Agency Data Sharing Work Group 2019 Work Plan



- Facilitation of Auto Theft Subcommittee
- Ongoing Data Support for Workgroups and CSG Project
- Collect and report out of yearly data listed in the Strategic Plan



## Discussion



***Next JJPOC Meeting  
June 20th, 2019  
2:00 – 3:30 PM***