
WOMEN IN ENGINEERING: 2024 - 2025

Leah Austin, Coordinator

University of New Haven



Table of Contents



Mission Statement



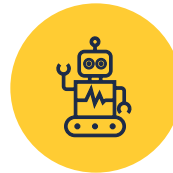
Letter From the Coordinator
Donor Thank You



Classroom Visits
• Survey Results
On-Campus Events



Summer Camps
Enrollment data



Future Plans
Thank you!

Mission Statement

We are a hands-on engineering program designed to introduce students to the world of engineering through real-world challenges, team-based problem-solving, and creative exploration. We aim to support students as they discover their interests, develop skills, and build confidence in their ability to succeed in engineering and beyond.

Program Philosophy Statement

Anyone can be an engineer, but not everyone gets the chance to see themselves that way. Through accessible experiences, supportive partnerships, and real-world design challenges, we help students recognize their potential and begin to build their identity as engineers, problem-solvers, and creators.

Letter from the Coordinator



Leah Austin

Dear Friends and Supporters,

This year has been one of growth for the Women in Engineering program. We reached over a thousand students through classroom visits, summer camps, STEM fairs, and more to help them see themselves as future engineers.

I am proud of the connections we've built with educators, families, our community, and the students who left our programs inspired to explore STEM further. We look forward to seeing their future success in STEM.

Thank you for being part of this journey. With your support, we look forward to expanding opportunities and continuing to inspire the next generation of innovators.

Thank you,
Leah Austin

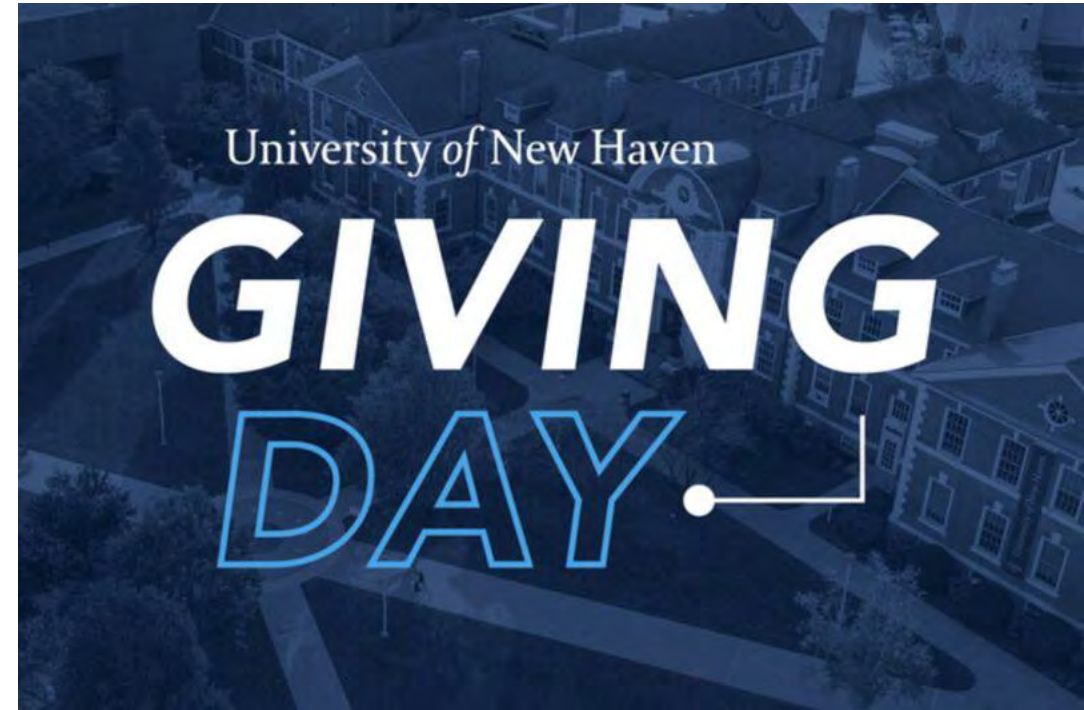
To our Donors

Thank you for your support of the Women in Engineering program this year. Your generosity made it possible for us to bring hands-on STEM to more classrooms, provide scholarships for our summer camp, and inspire the next generation of engineers.

Because of you, students learned confidence, curiosity, and a sense of belonging in STEM. Together, we are opening doors for students throughout Connecticut.

This program wouldn't be possible without you. We look forward to your future support!

Special thanks to the Henry Luce Foundation for the \$100,000 donation to expand our program.



REACHING MORE STUDENTS THAN EVER

WIE served 1,448 students

- 698 more than last year



University of New Haven





Engineering Classroom Experience

Hosted 28 in-class sessions across 13 schools

- Provided 535 students, grades 6–12, with hands-on engineering experiences

While we held three fewer sessions, we **increased** classroom reach by 201 students.

Improvements for next year:

- Surveyed 22 teachers across CT in May 2025
 - 59% need shortened sessions
 - 45% need curriculum-based sessions
 - 45% need more help to fit into their schedule

Measuring STEM Identities

This year, we launched the Engineering Identity Survey to evaluate our impact. Student's rank STEM Identity measures on a scale from 1 to 5 (low identity to high identity)

- 321 surveys collected (164 pre-surveys, 157 post-surveys)
- 64% coverage of spring visits



All Students

+25% in Engineering Identity
+11% in Science & Math Identity



Female Students

+38% in Engineering Identity
+14% in Science & Math Identity

STEM Identity Survey

Modeled after Predicting Persistence in Engineering through an Engineering Identity Scale by Patrick, A. D., and Prybutok, A. N

Engineering - Rate from 1 to 5 (Low to High)

	1	2	3	4	5
How interested are you in learning Engineering?					
How interested are you in a career in Engineering?					
Do you believe you would be good at Engineering?					
Do you think others (family, friends, teachers, etc.) would say you would be good at Engineering?					

Science and Math - Rate from 1 to 5 (Low to High)

	1	2	3	4	5
How interested are you in learning Science and Mathematics?					
How interested are you in a career in Science and Mathematics?					
Do you believe you would be good at Science and Math?					
Do you think others (family, friends, teachers, etc.) would say you would be good at Science and Math?					



The average student’s rating is 4.5 out of 5 stars



BRINGING STUDENTS TO THE UNIVERSITY OF NEW HAVEN

WIE hosted 7 on-campus events this year, reaching 549 students,
twice as many students as last year

WIE Partnered Events

- > ESUMS Visit to UNewHaven
(Grades 6 and 9)
- > VEX High School Qualifier Competition
(High School Students across CT)
- > Urban League of Greater Hartford Visit to UNewHaven (High School Students across the Hartford Area)
- > Sikorsky STEM Challenge Competition Day
(High School Students across CT)



WIE Exclusive Events

- > Explore Engineering Careers Day – April 4th

Brought in High School students from 6 schools across CT

24 Professionals supported, 37.5% were Alumni

Hosted 123 Students, 52% were female



Connecting with Communities

WIE participated in five community STEM expos and fairs.

Talked with **320 students** and their families in hands-on demos and conversations about STEM careers.

- STEAM Day at Amity – School-specific
- Fairchild Wheeler Science Fair – School-specific
- VEX regional championship – Open to all
- White Plains Engineering Expo – Open to all
- CCAT Career Fair – Open to all





Starting Early with Summer Youth Academies

Our pilot summer camp in Summer 2024 provided a hands-on introduction to engineering for 8 middle school students, including 3 girls.

Thanks to the Henry Luce Foundation, the 2025 Summer Camp cost for participants was reduced by **86%**, allowing us to offer **two camps** and reach **50 students** across the state

Results from the first camp show a **+10% in Engineering Identity**



ENROLLMENT: 2025 FRESHMEN CLASS

Supporting Admissions

WIE attended 7 admissions events this year.

Each female accepted student received a **personalized follow-up letter**.

- 73% of female students who engaged with WIE choose to enroll in TCoE
- 45% of female students who didn't engage with WIE at admissions events deposited

37% of the incoming female freshmen engaged with WIE before depositing *

- Up 15% from last year

* Enrollment Data as of May 1st





Looking Forward

Women in Engineering will continue offering free STEM activities to classrooms throughout the region, with a goal of visiting new schools across all grade levels.

Thanks to the Town Fair Tire Foundation, scholarships for our Summer Youth Academies will be provided to all students until 2027.

WIE will begin conducting research in our local communities to identify more effective ways to introduce STEM to students.



**THANK
YOU**

University of New Haven