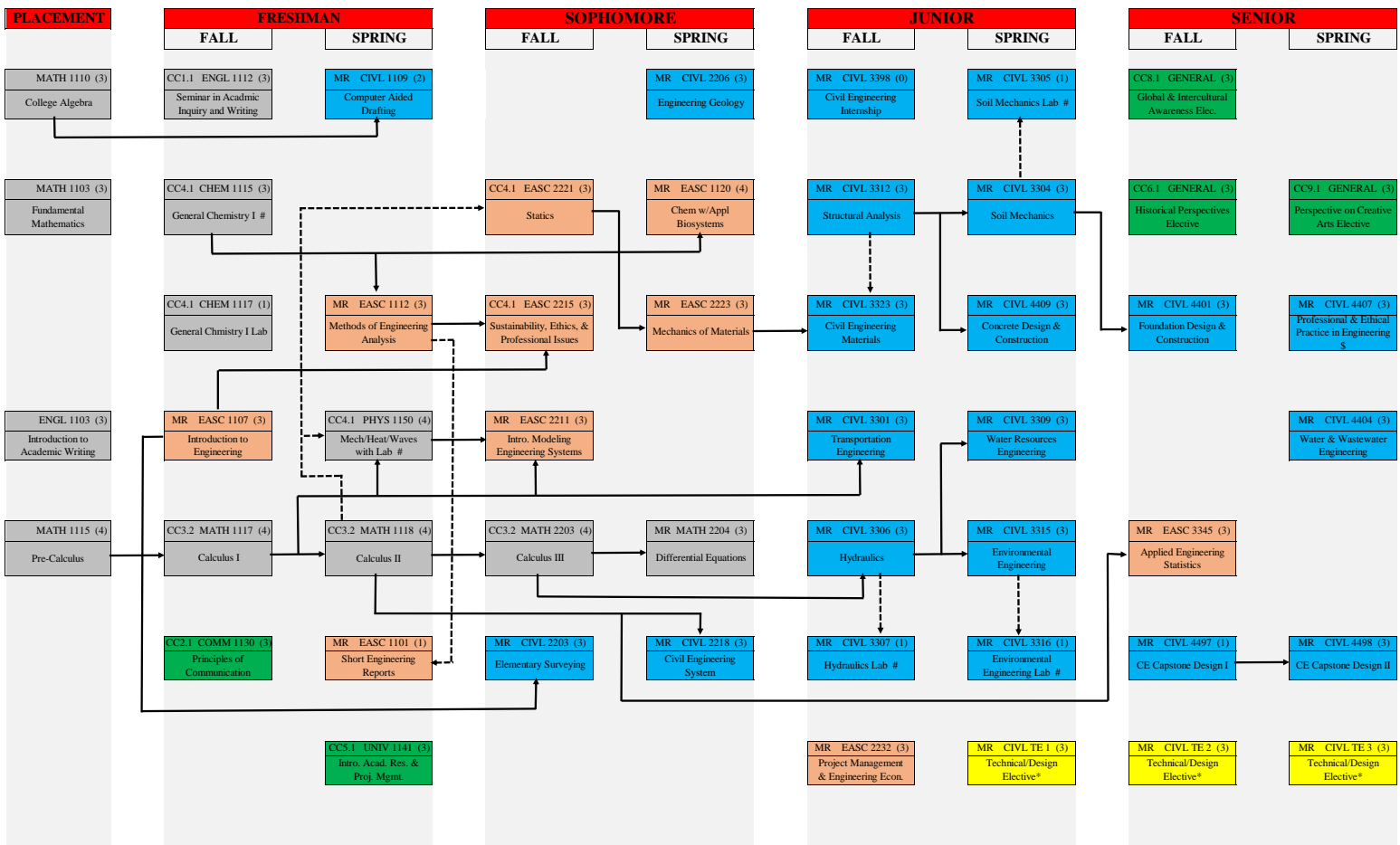




## BS CIVIL ENGINEERING FLOWCHART 2021-2022 (130 Credit Hours)



LEGEND	
	Civil Engineering Core Course
	Technical Elective
	Basic Engineering Course
	Basic Science Course
	University Core Course

Available Technical Electives		
Course No.	Course Name	Prerequisite
CIVL4403	Sustainable Urban Planning	EASC2215
CIVL4408	Steel Design @	CIVL3312
CIVL4411	Highway Engineering @	CIVL3301
CIVL4450	Special Topics	
CIVL4471	Undergraduate Research	
CIVL4505	Solid Waste Management @	CIVL3315
CIVL4520	Engineering Hydrology @	CIVL3309
CIVL4523	Open Channel Hydraulics @	CIVL3309
CIVL4593	Honors Thesis: Civil Engineering	
CIVL4599	Independent Study	

Symbols	Represents
#	Laboratory
	Prerequisite
	Prerequisite or Corequisite
CC	University Core Competency - see advisor for selection <a href="http://catalog.newhaven.edu/content.php?catoid=22&amp;navoid=1517#University_Core_Curriculum">http://catalog.newhaven.edu/content.php?catoid=22&amp;navoid=1517#University_Core_Curriculum</a>
MR	Major Requirement
*	Civil Technical Elective Courses Offered: 2 of 3 courses (6 credits) must be Civil Engineering Design Electives
\$	Writing Across Curriculum Course
@	Design Elective