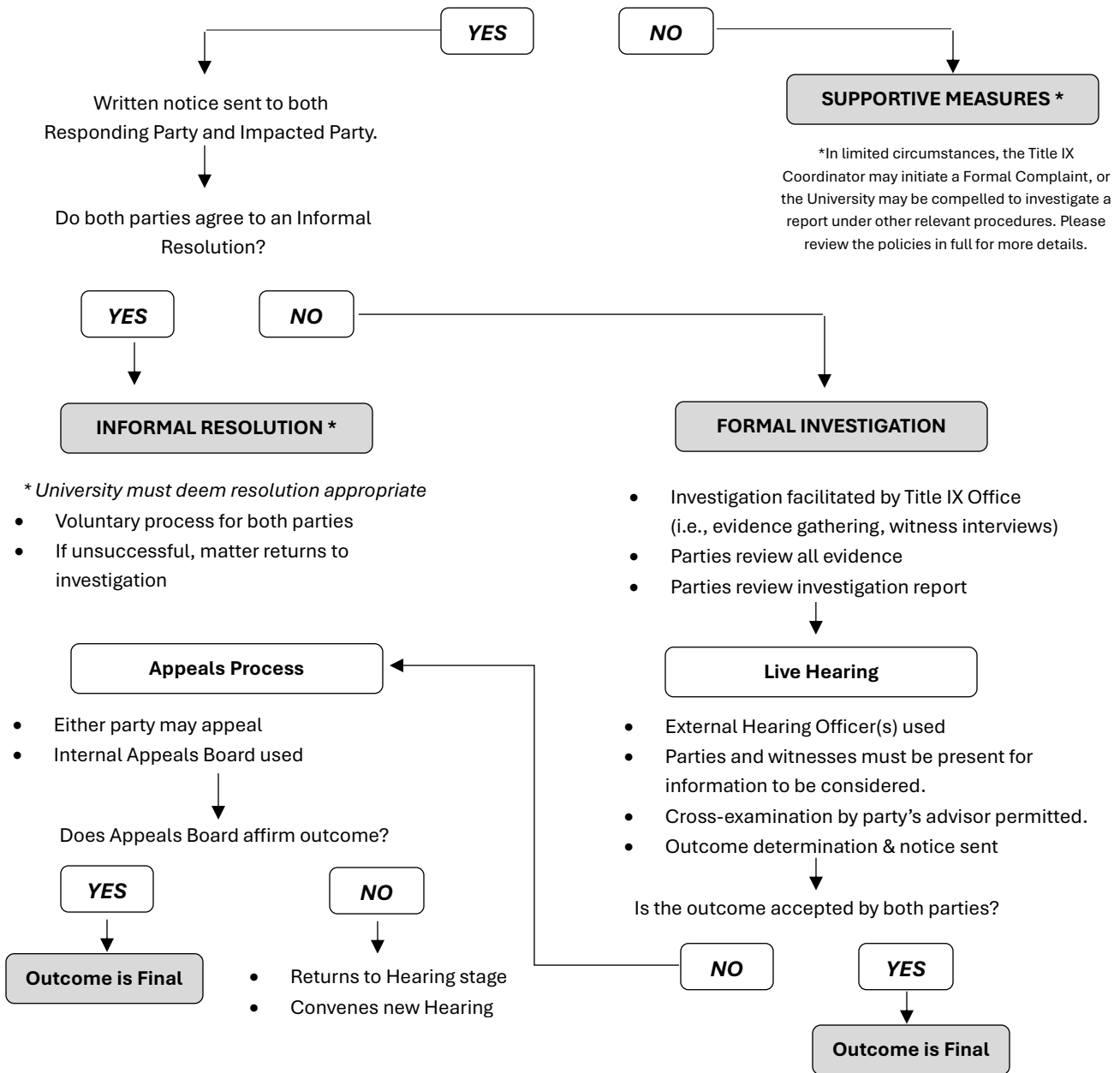


# Title IX Decision Tree for Allegations under the Sexual Harassment & Misconduct Policy

Conduct that falls under the University's Policy on Sexual Harassment & Misconduct (Title IX) is addressed by the procedures that accompany the Policy. This flow chart is designed to give an *overview* of the procedures. See Policy for definition of terms used. You are encouraged to reach out to the Title IX Office for help navigating through these procedures.

**NOTE: Supportive measures are available to both parties during the entire process.**

Does the Reporting Party want to request an investigation or reported conduct (i.e., file a Formal Complaint)?



NOTE: A Formal Complaint can be dismissed at any time prior to outcome of Hearing. Either party can appeal the dismissal.

