

Message from the Chair

INSIDE THIS ISSUE:

Message from the Chair	1
Graduate Student Calendar	1
Info, Reminders and Deadlines	2
Testing	2
ED 680 in France/England	3
ED 636 Early Literacy	3
Teaching and Your Online Brand	3
Fall Intern News	4
Fall Capstone News	4
Faculty News	6
Handy Websites	6

This fall, the UNH Education Department is continuing its year-long process of applying for national accreditation from the National Council for the Accreditation of Teacher Education (NCATE) and the Connecticut State Department of Education. While this news may not sound as though it impacts your time with us as students, it's important to be aware of for a few reasons:

- Given the current socio-political contexts of American public schooling, accreditation carries weight whether we want it to or not. Having a national "seal of approval" indicates that the department speaks the language of other educators. People outside the university might not notice UNH if the "NCATE-Approved" seal is there, but they'll notice if it is not.
- Accreditation also serves as a marker that pre-service teacher education programs are at least attempting to create a common body of professional knowledge. Just like the medical and legal professions have done, so too must Education programs agree that there are specific, high-quality curricula to which all the nation's pre-service teachers should adhere. While being accredited is not a sufficient indicator of quality programs, being able to go through the process may be a necessary lever to becoming a quality program.
- As teachers, your schools will be accredited by a regional body – most likely NEASC if you stay in Connecticut. You, too, will have to learn the process of reporting data for the purpose of showing that you have met particular standards. Knowing that your alma mater has done so means that you are already familiar with the language, process, expectations, and flaws (there are many) of the accreditation process.

As the UNH Education Department marks its 20th anniversary, we are proud to note that we have been a part of the Connecticut teacher preparation fabric since the mid 1990's. Then as now, our department is characterized by a passion for helping pre-service teachers learn pedagogical arts and sciences while making a lifelong commitment to the teaching profession. It has never been easy, but it has always been worthwhile. We know now, more than ever, that we are singular in our dedication to helping people become and remain teachers – the most powerful professionals of all.

Thank you for being brave enough to join us our commitment to public schooling and excellent education for every child.

Sincerely,
Nancy S. Niemi



University of New Haven
Education Department
600 Sawmill Road
West Haven, CT 06516
203-932-7037
www.newhaven.edu/education

Graduate Student Calendar

November 18	DEADLINE to apply for May graduation and commencement
November 21-25	Thanksgiving week– NO CLASSES at UNH
December 12	Last day of Education classes
December 12	ED601 Introduction to Education begins
December 15	Registration deadline for January 14 Praxis II exam

Testing

Foundations of Reading Exam

Elementary candidates must pass the Foundations of Reading Test *before* applying for teacher certification. Third trimester elementary candidates planning to be student teachers this winter, 2012 should take the Foundations of Reading Test on **November 19, 2011**, if you have not already taken and passed this test.

If interested in taking this test on 11/19/11 *and* attending a review session, contact Dr. Randi at jrandi@newhaven.edu

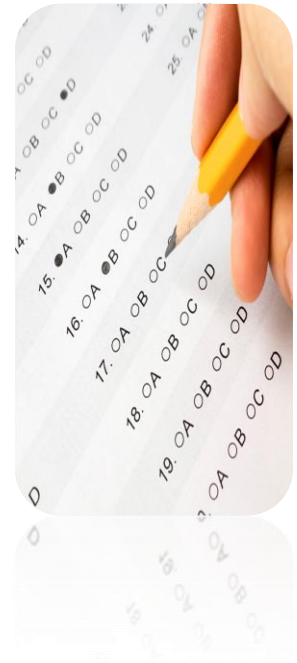
First trimester elementary candidates should plan to take the Foundations of Reading Test after taking both *ED 636 - Early Literacy* and *ED 626E - Reading and Language Arts Strategies*. If

you are taking ED 626E this winter, you should plan to register for the **May 12, 2012** test administration.

Information, practice test items, and registration materials are available at

www.ct.nesinc.com

When you register, be sure to list *University of New Haven* as your score report recipient.



Praxis II Exams

The Praxis II exam is a state requirement to determine competency in the area of certification. Praxis II test codes are listed in the Student Program Handbook.

Secondary teacher candidates should take the Praxis II exam as soon as possible because it must be passed prior to applying for student teaching. Secondary Praxis II tests emphasize content knowledge in the subject area.

Elementary teacher candidates are encouraged to take the Praxis II in their third trimester, after taking their strategy courses.

Education students must pass the Praxis II exam in order to be a certified teacher in the state of Connecticut.

Praxis II Registration

Test Date	Registration Date	Late Registration w/ \$45 Fee
January 14, 2012	December 15, 2011	December 22, 2011
March 10, 2012	February 9, 2012	February 16, 2012

Alert For Third Trimester Elementary Candidates

As you know, the state of Connecticut is in the process of implementing a new standardized math test as an *additional* requirement for *elementary certification*. The latest information we have is that this requirement could go into effect as of *July 1, 2012*. This means that those of you who are planning to complete your student teaching this May, will be certifiable before July 1, and thus not bound by the new requirement AS LONG AS you have passed the elementary Praxis II and the Foundations of Reading tests in addition to fulfilling the UNH certification requirements. (The PLT is not required for certification.) If your certification cannot be processed before July 1, 2012, it is likely that you will need to take the new math test.

Therefore, you should plan to take and pass Praxis II and the reading test as soon as possible if you have not already done so. Please consult the appropriate websites for test dates and registration information. Go to www.ets.org for the Praxis tests and <http://www.ct.nesinc.com/> for Foundations of Reading.

*Education
is not a
preparation for
life;
education is life
itself.*

-John Dewey-

Info, Reminders & Deadlines

REGISTRATION INFORMATION for 2012

All students *must register* for winter and Spring trimester classes. Be sure to register for the correct section code as listed on your course schedule. Here are directions on how to register.

1. Log on to Matrix Student Self-Service System using your logon password.
2. If you have a problem logging onto Matrix, contact matrixstudentsupport@newhaven.edu.
3. Once logged on, register for the classes listed on your schedule. ***Do this for both winter and spring trimesters!***

BUSINESS CANDIDATES

There is a new PRAXIS II Business test – Test #0101; minimum passing score =154

CERTIFICATION EXIT INTERVIEW

Fall 2011 student teachers are reminded that they must make an appointment for an exit interview with the Certification Officer, Phyllis Gwatkin, by phone: 203.932.7336 or e-mail:

pgwatkin@newhaven.edu.

The exit interview procedure is outlined on the education homepage under [forms and handbooks](#).

APPLICATION FOR DEGREE

Use this link for information to apply for graduation.

<http://www.newhaven.edu/academics/13275/>

For more details on the ceremony and important information leading up to it, visit the UNH [Commencement page](#).

FORMER STUDENTS

This is a reminder to please pick up intern, capstone, and student teaching portfolios from fall 2010. Education Department policy states that they will be stored for one year and then discarded. Please call the office to make an appointment.

STUDENT E-MAIL ADDRESSES

remain active only as long as they are used. If an e-mail has been inactive for a year, it will be terminated.

INCOMPLETE GRADES

All students in the M.S. in Education Program are responsible for checking their transcripts to make sure that they have no outstanding Incomplete (INC) grades. While the University allows students up to one year to

make up an incomplete, the *Education Department policy is much stricter: students must complete all work for the incomplete grade no later than the last day of the term following the course where the Incomplete occurred.* All students must fill out the Request for an Incomplete Grade form, in conjunction with their professor, in order to be eligible for this option. *Under no circumstances will Incomplete grades be allowed for the purpose of doing extra credit work in order to raise a student's course grade.*

ED 680 - Study Abroad - France & England

On October 23rd, Dr. Perry and three graduate candidates in the Teacher Certification Program presented their observations on international education at a conference in Boston. Molly Seely, Allison Altieri and Maren Rezendes discussed their experiences and conclusions from the new *ED680-International* course at the *One Voice International Education Conference*. ED680 focused on special education issues.



At the conference, the UNH presenters discussed inclusion as practiced in the U.S., England and France. All agreed that full inclusion as found in the United States was a one-size-fits-all approach that was not as educationally sound as the approach in the U.K.

In 2012, Dr. Perry's *ED 680-International* will be adding The Netherlands to the program. Twelve students have signed up for a program that will evaluate special education practices in

the United States, England, France and Holland.

In early October, educators from Amsterdam came to Connecticut to help plan the Dutch segment of the program. *ED680 International* is scheduled to run from **May 12-29, 2012.**

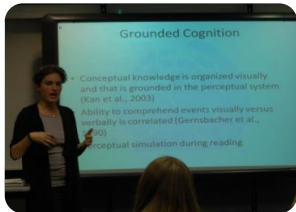
For more information, contact David Perry, (203) 932-7392 or dperry@newhaven.edu



Everything works when the teacher works. It's as easy as that, and as hard.

Marva Collins

ED 636 - Visual Literacy Guest Presentation



Elementary education teacher candidates in Dr. Randi's *ED 636 - Early Literacy* classes had a first-hand opportunity to learn how the arts can support children's literacy. Guest speaker, Cyra Levenson, Associate Curator of Education at the Yale Center for British Art (YCBA) described how visual literacy can be integrated into primary grade curricula to support young children's reading and writing development. The YCBA has become "an extension of the classroom" for many area schools participating in the art museum's visual literacy program, where art serves as the medium for creative expression by encouraging

children to express their ideas through visual, verbal, and written modes of communication.

Dr. Randi, Associate Professor of Education, has been working with colleagues at the YCBA to establish a partnership so that the YCBA can become an extension of the UNH classroom to prepare teachers to incorporate the arts into literacy instruction in their classrooms. Dr. Randi was introduced to the YCBA visual literacy program in 2009 while on a sabbatical leave collaborating with Yale Child Study Center (YCSC) colleagues.

Since then, Dr. Randi has been conducting the qualitative component of the YCSC/YCBA visual literacy project. Her research involves interviewing children to study their thought processes that lead to written expression as well as teacher observation studies to describe teachers' innovative practices within the context of the visual literacy program. This summer, the research team presented their work at the International Association of Cognitive and Educational Psychology.

For more information, contact Dr. Randi at jrandi@newhaven.edu



Teaching and Your Online Brand

How well do you create and cultivate your online presence? As literacy increasingly moves from page to screen, it is important for teachers to not only reflect these changes in pedagogy and practice, but also our online identity. We wouldn't enter our classrooms hastily or shabbily dressed, but often times this same thought does not go into how we present ourselves online.

One method that can be used to build, modify, and maintain our online presence is to revise our classroom website. Teachers need to consider three areas when reviewing their classroom website. *First*, what is the purpose of the information you present at your website? Why is the information there, and what do you expect your audience to do with it? *Second*, who is the intended audience of your website? Is the information you present appropriate for the purpose and audience? Third, what design elements are used to attend to the desired purpose, or intended audience? These design elements can include the words, images, videos, and links added to the webpage. They can also include aesthetic elements of web design that affect the usability of the webpage, such as the layout of the webpage.

An example of these three points in action can be seen at Mrs. Renz's website for her classroom in Redmond, WA (www.mrsrenz.net). The purpose of the website is to act as an information resource, but also provide some interactivity to attract online readers. The website also offers three "pathways" for visitors (Just For Students, Just For Parents, Just For Teachers). This design element ensures that the intended audience receives the appropriate information. Finally, the subsequent pages of the website are organized using animated images that make it easier for the audience to quickly navigate through. The end result is an engaging, interactive website that adds to Mrs. Renz's online presence.

Column originally posted at: <http://www.reading.org/General/Publications/blog.aspx>

*Worlds can be
found by a child
and an adult
bending down
and looking
together under
the grass stems or
at the skittering
crabs in a tidal
pool.*

-Mary Catherine Bateson-

Fall Intern News

All third term interns should be in the process of compiling the elements of Intern Portfolios. This required document is to be submitted to your supervisor on a date in December mutually agreed upon. The Portfolio will constitute a major portion of your third trimester grade. Your Program Handbook details the portfolio sections so please consult this as your guide. You can retrieve your portfolio when you attend the initial student teaching seminar in January.

Remember that your **fall trimester classes end on Monday, December 12, 2011 but your internship does not end until your school district breaks for Christmas.** The winter trimester begins on *January 3, 2012.*

First term interns should be well into your journal writings and by now have been observed by your supervisor at least twice. Your supervisor should be forwarding you all your evaluation forms from both your journal and observations. Please keep these as you will need them as you progress through the program. If your supervisor has not submitted these to you, ask them for copies.

Should you know of anyone who may be interested in our program, I will be at the Graduate Open House on Saturday, November 12th on the main campus. The session includes time for me to do a presentation on the details of our program and address any questions they may have. They can register for the session on-line any time now.

Any questions or concerns may be forwarded to nmaiorino@newhaven.edu.

*Nobody starts out
as a completely
effective and
creative
teacher... The
desire to teach and
the ability to teach
well are not the
same thing. With
the rarest of
exceptions, one has
to learn how to
become a good
teacher.*

Herbert Kohl

Fall Capstone News

All Capstone Candidates can download all assignments from the following Blackboard sites they are already enrolled in.

- **Field Experience I (01-F11)**
- **Field Experience II (01-F11)**
- **Field Experience III (01-F11)**

ED 692C students are reminded to complete the following assignments that are due by the *end of October.*

- ☞ Classroom Environment
- ☞ Teacher Interview

The following are due by the *end of the Fall trimester.*

- ☞ Lesson Observation
- ☞ Reflection

ED 693C students are to complete the following assignments due by the *end of the fall trimester.*

- ☞ Lesson Observation II
- ☞ Reflection

ED 694C students are reminded that a **Capstone Portfolio** will be *due this trimester.* Make sure a copy of the **mentor's** and **evaluator's rubric**, **lesson plan**, and **lesson reflection** are sent to the Capstone office.

All students planning on taking **ED 694C** in the Winter or Spring Trimesters of 2012 should hand in an application and resume by *January 8, 2012.*

Any questions or more information please contact John Ciochine, (203) 932-7036 or JCiochine@newhaven.edu



Faculty News



Congratulations Dr. Randi

Judi Randi, Associate Professor of Education, was recently appointed as a University Research Scholar. She joins a group of ten UNH faculty scholars recognized for their special contributions to the university and their academic disciplines. Dr. Randi is the first faculty member in the Education Department to be recognized as a University Research Scholar.

This award will support Dr. Randi's on the applications of theoretical principles and research-based interventions in particular teaching situations. The focus of Dr. Randi's current research is a collaborative project with colleagues at the Yale Child Study Center and the Yale Center for British Art. Dr. Randi and her colleagues are studying how classroom teachers incorporate visual literacy into their curricula, using an innovative, theory-based approach for promoting primary students' literacy development through visual literacy activities. In particular, Dr. Randi is studying children's cognitive processes as they transition from visual literacy activities to verbalizing their thoughts, and finally to expressing their thoughts in writing. Studying the implementation of this visual literacy project extends Dr. Randi's research program, which focuses on "collaborative innovation" – a process in which teachers and researchers work together to document the innovative instructional practices that teachers invent consistent with psychological theory yet attuned to the individual differences of their students and teaching situations.

Dr. Randi, who received her doctorate from Teachers College Columbia University, has been collaborating with colleagues in the Yale Psychology Department and the affiliated research labs since serving there as a postdoctoral associate early in her academic career. Dr. Randi has authored and co-authored numerous publications on teacher innovations, adaptive teaching, self-regulated learning, and creative writing.

Welcome New Faculty

W. Ian O'Byrne is an Assistant Professor of Educational Technologies. He is a former researcher with the New Literacies Research Lab at the University of Connecticut. He has been involved in initiatives in school districts ranging from online and hybrid coursework, integrating technology in the classroom, ePortfolio systems, and supporting marginalized students in literacy practices. He is currently a member of AERA, NCTE, and currently serves on the Policy and Legislative Committee for LRA, and the Technology, Communication, and Literacy committee for IRA. His research interests examine the reading and content creation practices employed by adolescents in online spaces. You can find out more about him at <http://flavors.me/wiobyrne>.

Dr. Catherine Koehler has joined UNH as an assistant professor of science education. She is returning to her home state of Connecticut after living in Cincinnati, OH and Chicago, IL. Dr. Koehler holds a Ph.D. in Curriculum & Instruction-Science Education from the University of Connecticut's Neag School of Education. Her research interests include systemic reform in education focusing on inquiry-based/NOS science in the K12 classroom, STEM Education, urban education and the magnet school movement. Currently, she is collaborating with colleagues from TCU and UNC-Charlotte on a project that explicitly targets tenets of nature of science in multimedia films. Dr. Koehler also holds a secondary teaching certification in earth/space science and general science and has taught 9th grade in CT for several years. She is excited to join the faculty at UNH and looks forward to meeting the students in our program. She will be teaching all science methods courses and would love to teach other science topics such as the history of science, nature of science and teaching science in the outdoors

SOME HANDY WEBSITES...

Education Department: [HTTP://WWW.NEWHAVEN.EDU/EDUCATION](http://www.newhaven.edu/education)

Graduate Student Information: [HTTP://WWW.NEWHAVEN.EDU/15/](http://www.newhaven.edu/15/)

Marvin K. Peterson Library: [HTTP://WWW.NEWHAVEN.EDU/LIBRARY/](http://www.newhaven.edu/library/)

Chargers Information: [HTTP://WWW.NEWHAVENCHARGERS.COM/](http://www.newhavenchargers.com/)

UNH Bookstore Hours: [HTTP://WWW.NEWHAVEN.EDU/24060/](http://www.newhaven.edu/24060/)

Graduation: <http://www.newhaven.edu/academics/13275/>, or <http://www.newhaven.edu/news-events/28842/>

Other Interesting sites: <http://www.pbs.org/teachers/>,

<http://education.nationalgeographic.com/education/>

<http://www.kellybear.com/TeacherArticles/TeacherTip67.html>

*Wisdom
begins with
wonder*

-Socrates-