

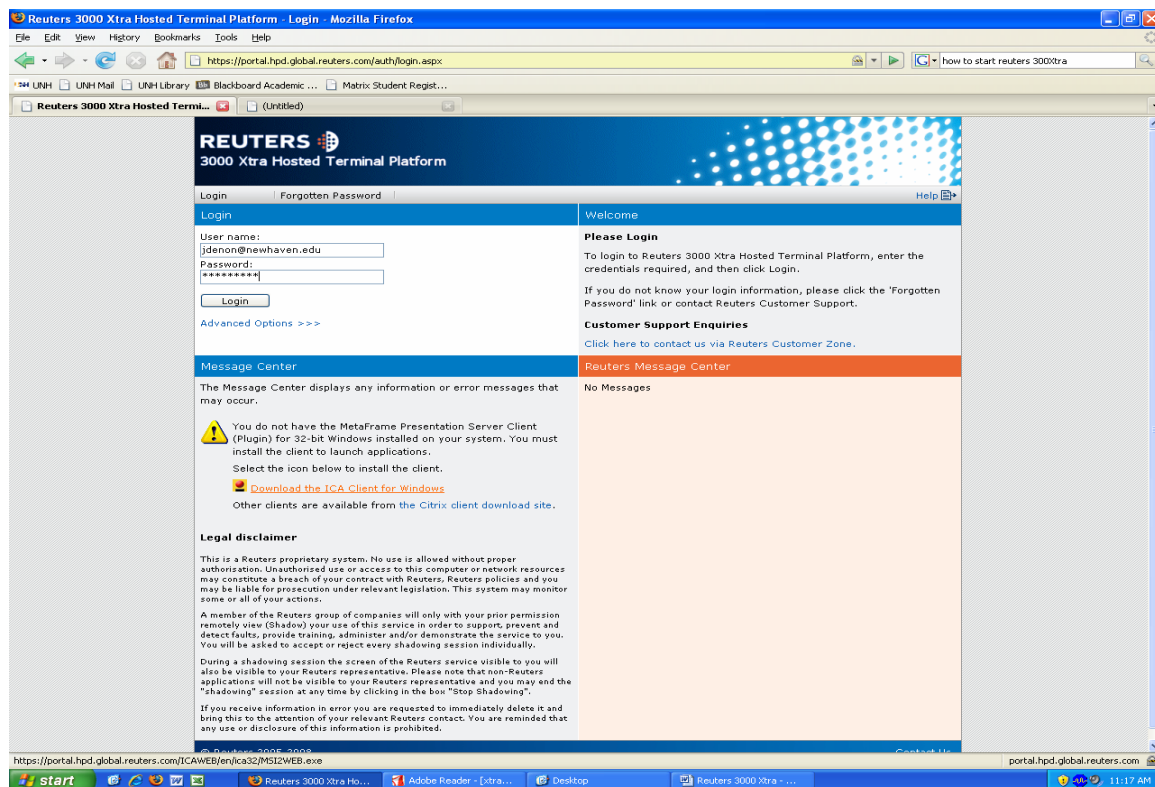
Reuters 3000 Xtra

<http://customers.session.rservices.com/a/support/paz/default.aspx?pId=1979&vId=1051&loc=>

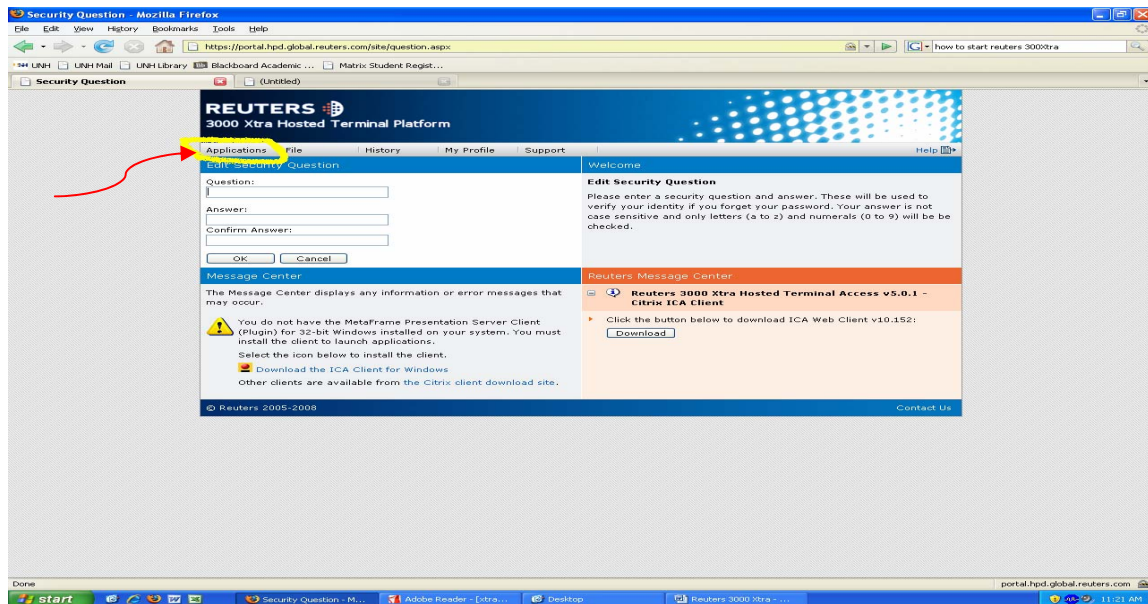
Reuters 3000 Xtra is a high-speed, integrated information and transaction service. It gives users a commanding view of the global real-time financial arena and provides a combination of news, information and insight as well as access to the global Reuters trading community. Its integrated price discovery and trading capabilities across all asset classes mean that decisions can be made and executed from a single desktop. Reuters 3000 Xtra reflects Reuters vast experience in global financial markets; functionality is continually upgraded and content enriched.

Steps to Log in

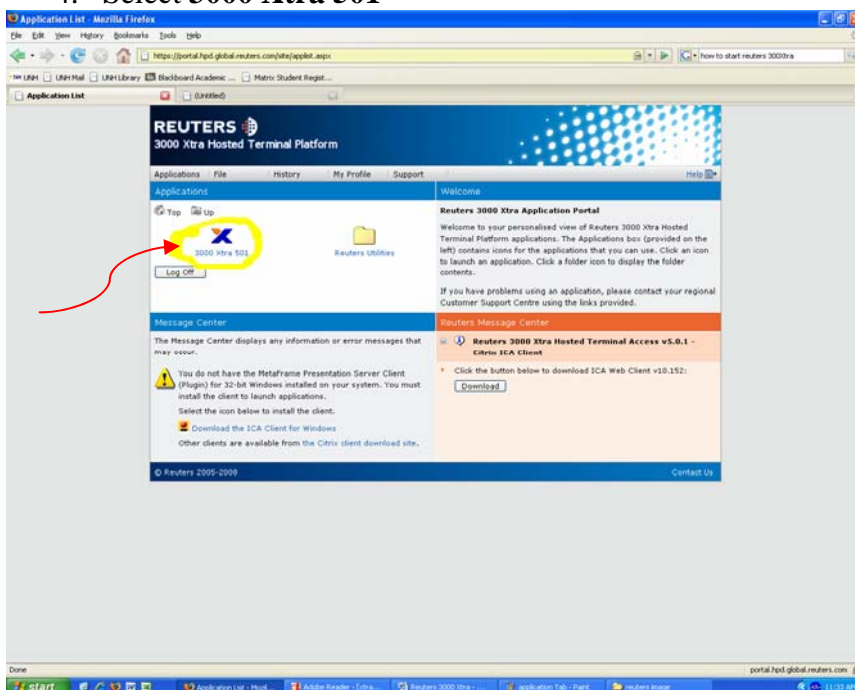
1. Type the web address: <https://portal.hpd.global.reuters.com/auth/login.aspx>
2. Enter **Username** and **Password** (click on **Login** tab rather than pressing enter after password)



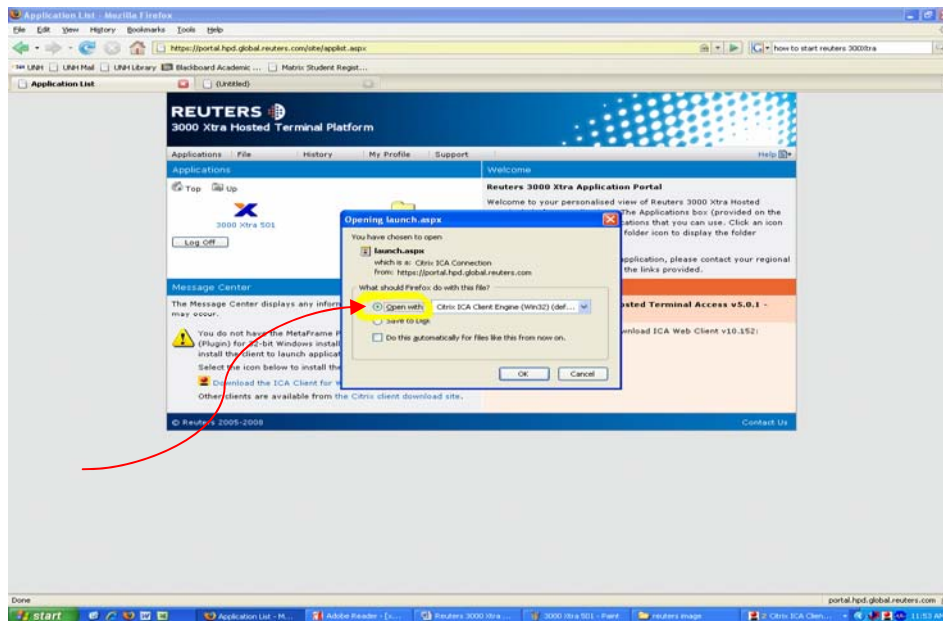
3. Select Applications tab



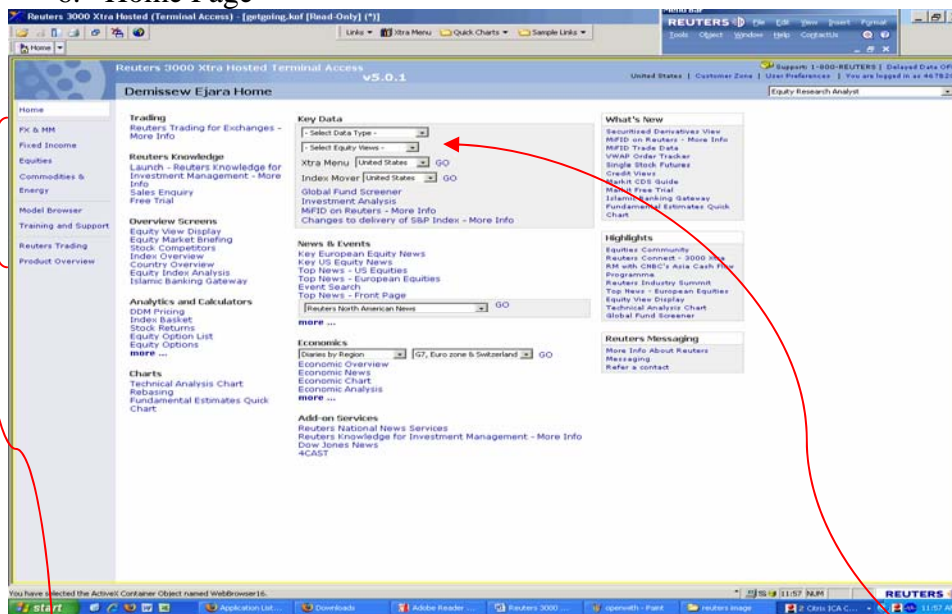
4. Select 3000 Xtra 501



5. Select **Open with** and click on **OK**



6. Home Page



Steps to view Bonds and its yield and maturity date

1. Select **Fixed Income** from the list of left column
2. Select the required date from the drop down menu bar of **Key Fixed Income Data**

3. Select the country and click on Go



US Treasury bond data

Quote: OUSTSY= USD **UST - Curve**

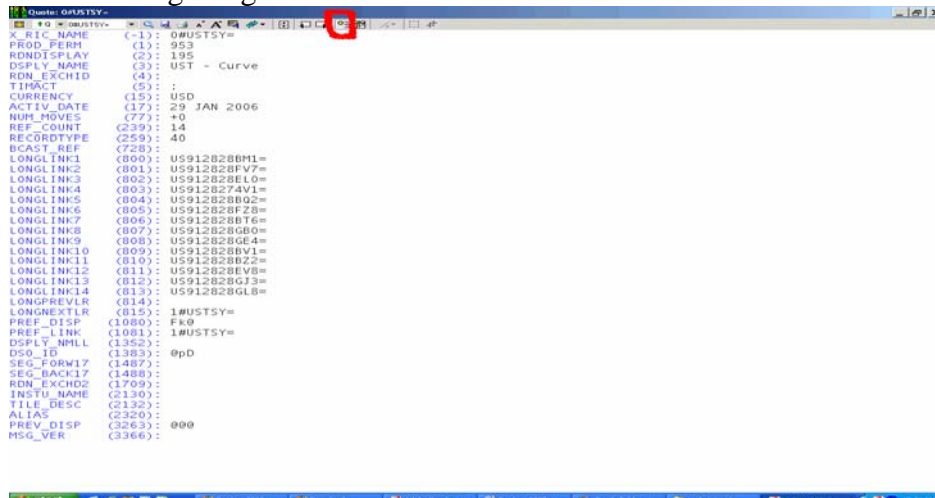
Name	Coupon	Mat. Dat	Curr	Bid	Ask	Net.Chng	Bond Type	B Yld	A Yld	Yld	Bnk Spread	Spread to Swap
UST 3 1/8 0/08	3.125	15OCT08	USD	99*30 1/4	A100*00 1/4	-0.0550	STR	5.9151	2.4603	+2.836	+547.9	+306.0
UST 4 7/8 0/08	4.875	31OCT08	USD	100*01 1/4	A100*03 1/4	-0.2030	STR	3.9723	2.9996	+3.015	+353.6	+103.2
UST 4 3/8 N/08	4.375	15NOV08	USD	100*09 1/4	A100*11 1/4	-0.0980	STR	1.5450	0.9179	+0.837	+111.4	-130.8
UST 4 3/4 N/08	4.75	15NOV08	USD	100*13 1/4	A100*13 1/4	-0.0970	STR	1.3877	0.7620	+0.812	+95.7	-146.5
UST 3 3/8 N/08	3.375	15NOV08	USD	100*06 1/4	A100*08 1/4	-0.0980	STR	1.5023	0.9390	+0.865	+107.1	-135.0
UST 4 5/8 N/08	4.625	30NOV08	USD	100*16 1/4	A100*18 1/4	-0.1440	STR	1.0392	0.6468	+0.891	+60.8	-185.4
UST 3 3/8 D/08	3.375	15DEC08	USD	100*14 1/4	A100*16 1/4	-0.1170	STR	1.0025	0.6733	+0.578	-4.5	-193.7
UST 4 3/4 D/08	4.75	31DEC08	USD	100*26 1/4	A100*28 1/4	-0.0860	STR	1.0649	0.7984	+0.323	+1.8	-187.3
UST 4 7/8 1/09	4.875	31JAN09	USD	101*06 1/4	A101*07 1/4	-0.0700	STR	0.9790	0.8942	+0.185	-6.3	-192.0
UST 3 1/4 1/09	3.25	15JAN09	USD	100*18 1/4	A100*21 1/4	-0.1400	STR	1.0429	0.8003	+0.487	-0.4	-185.2
UST 3 2/09	3	15FEB09	USD	100*22 1/4	A100*23 1/4	-0.0310	STR	0.9649	0.9536	+0.071	-7.7	-188.8
UST 4 1/2 2/09	4.5	15FEB09	USD	101*07 1/4	A101*09 1/4	-0.0590	STR	0.9547	0.8571	+0.137	-9.2	-198.5
UST 4 3/4 2/09	4.75	28FEB09	USD	101*15 1/4	A101*16 1/4	-0.0510	STR	0.9640	0.8843	+0.1	-30.2	-197.8
UST 4 1/2 3/09	4.5	31MAR09	USD	101*19 1/4	A101*20 1/4	-0.1410	STR	1.1067	1.0406	+0.27	-15.5	-177.6
UST 2 5/8 3/09	2.625	15MAR09	USD	100*23 1/4	A100*24 1/4	-0.0510	STR	0.9440	0.8619	+0.105	-32.2	-191.1
UST 3 1/8 4/09	3.125	15APR09	USD	100*31 1/4	A100*31 1/4	-0.0780	STR	1.2097	1.2097	+0.139	-5.7	-164.5
UST 4 1/2 4/09	4.5	30APR09	USD	101*24 1/4	A101*25 1/4	-0.1640	STR	1.3648	1.2611	+0.272	+9.8	-157.5
UST 4 7/8 5/09	4.875	15MAY09	USD	102*02 1/4	A102*03 1/4	-0.1330	STR	1.4145	1.3572	+0.201	+14.7	-152.5
UST 5 1/2 5/09	5.5	15MAY09	USD	102*12 1/4	A102*13 1/4	-0.1710	STR	1.4944	1.4373	+0.26	+22.7	-140.0
UST 3 7/8 5/09	3.875	15MAY09	USD	101*15 1/4	A101*16 1/4	-0.1290	STR	1.3943	1.3416	+0.2	+12.7	-154.5
UST 4 7/8 5/09	4.875	31MAY09	USD	102*06 1/4	A102*07 1/4	-0.0980	STR	1.4155	1.3742	+0.135	+14.8	-152.7
UST 4 6/09	4	15JUN09	USD	101*26 1/4	A101*27 1/4	-0.0360	STR	1.3288	1.2884	+0.041	+6.2	-161.3
UST 4 7/8 6/09	4.875	30JUN09	USD	102*16 1/4	A102*17 1/4	-0.0780	STR	1.3932	1.3459	+0.093	+12.6	-154.9
UST 3 5/8 7/09	3.625	15JUL09	USD	101*20 1/4	A101*21 1/4	-0.1170	STR	1.4742	1.4290	+0.143	+15.2	-146.8
UST 4 5/8 7/09	4.625	31JUL09	USD	102*19 1/4	A102*20 1/4	-0.1330	STR	1.3776	1.3388	+0.15	+5.0	-151.7
UST 4 7/8 8/09	4.875	15AUG09	USD	102*27 1/4	A102*27 1/4	-0.1250	STR	1.4939	1.4883	+0.133	+16.6	-140.2
UST 3 1/2 8/09	3.5	15AUG09	USD	101*21 1/4	A101*22 1/4	-0.1370	STR	1.5327	1.4965	+0.153	+20.5	-136.2
UST 6 8/09	6	15AUG09	USD	103*23 1/4	A103*24 1/4	-0.1490	STR	1.5605	1.5249	+0.157	+24.5	-138.0

4. To view the list of field click on + sign

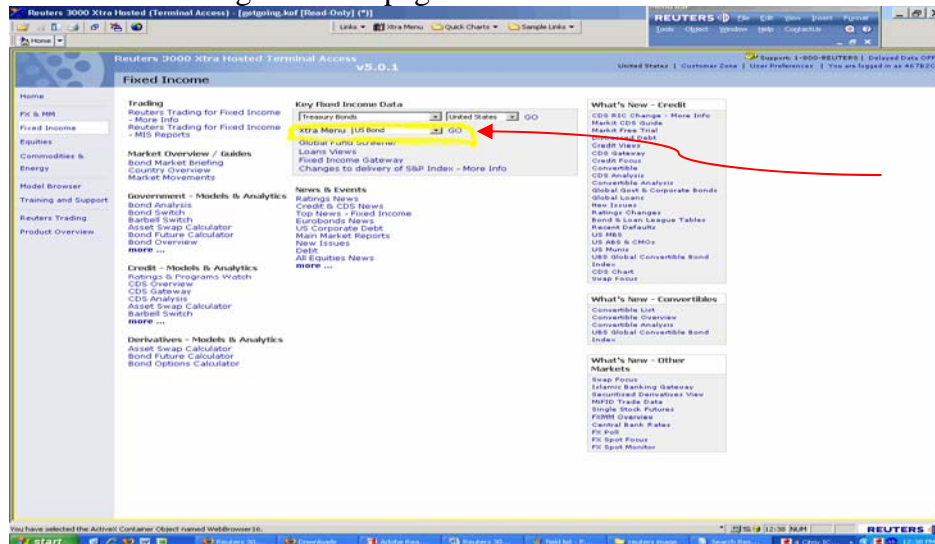
Quote: OUSTSY= USD **UST - Curve**

Name	Coupon	Mat. Dat	Curr	Bid	Ask	Net.Chng	Bond Type	B Yld	A Yld	Yld	Bnk Spread	Spread to Swap
UST 3 1/8 0/08	3.125	15OCT08	USD	99*30 1/4	A100*00 1/4	-0.0550	STR	5.9151	2.4603	+2.836	+547.9	+306.0
UST 4 7/8 0/08	4.875	31OCT08	USD	100*01 1/4	A100*03 1/4	-0.1990	STR	3.9095	2.9996	+2.952	+347.8	+105.9
UST 4 3/8 N/08	4.375	15NOV08	USD	100*09 1/4	A100*11 1/4	-0.0980	STR	1.5450	0.9179	+0.837	+111.4	-130.8
UST 4 3/4 N/08	4.75	15NOV08	USD	100*13 1/4	A100*13 1/4	-0.0970	STR	1.3877	0.7620	+0.812	+95.7	-146.5
UST 3 3/8 N/08	3.375	15NOV08	USD	100*06 1/4	A100*08 1/4	-0.0980	STR	1.5023	0.9390	+0.865	+107.1	-135.0
UST 4 5/8 N/08	4.625	30NOV08	USD	100*16 1/4	A100*18 1/4	-0.1560	STR	1.1205	0.6739	+0.972	+69.5	-172.7
UST 3 3/8 D/08	3.375	15DEC08	USD	100*13 1/4	A100*15 1/4	-0.1210	STR	1.0258	0.6945	+0.6	-2.8	-182.9
UST 4 3/4 D/08	4.75	31DEC08	USD	100*27 1/4	A100*29 1/4	-0.0780	STR	1.0305	0.7641	+0.289	-2.2	-185.3
UST 4 7/8 1/09	4.875	31JAN09	USD	101*06 1/4	A101*08 1/4	-0.0660	STR	0.9664	0.8565	+0.173	-8.1	-188.4
UST 3 1/4 1/09	3.25	15JAN09	USD	100*19 1/4	A100*21 1/4	-0.1280	STR	0.9888	0.7856	+0.443	+5.3	-185.4
UST 3 2/09	3	15FEB09	USD	100*22 1/4	A100*23 1/4	-0.0310	STR	0.9649	0.9536	+0.071	-7.7	-188.8
UST 4 1/2 2/09	4.5	15FEB09	USD	101*07 1/4	A101*09 1/4	-0.0590	STR	0.9547	0.8571	+0.137	-9.2	-198.5
UST 4 3/4 2/09	4.75	28FEB09	USD	101*16 1/4	A101*17 1/4	-0.0390	STR	0.9341	0.8569	+0.07	-32.2	-195.7
UST 4 1/2 3/09	4.5	31MAR09	USD	101*19 1/4	A101*20 1/4	-0.1410	STR	1.1067	1.0406	+0.27	-15.5	-177.6
UST 2 5/8 3/09	2.625	15MAR09	USD	100*23 1/4	A100*23 1/4	-0.0660	STR	0.9782	0.9075	+0.139	-27.8	-191.2
UST 3 1/8 4/09	3.125	15APR09	USD	101*00 1/4	A101*00 1/4	-0.0620	STR	1.1790	1.1790	+0.108	-7.7	-171.2
UST 4 1/2 4/09	4.5	30APR09	USD	101*23 1/4	A101*25 1/4	-0.1680	STR	1.3719	1.2611	+0.279	+12.0	-155.8
UST 4 7/8 5/09	4.875	15MAY09	USD	102*02 1/4	A102*03 1/4	-0.1330	STR	1.4145	1.3622	+0.201	+16.3	-151.7
UST 5 1/2 5/09	5.5	15MAY09	USD	102*12 1/4	A102*13 1/4	-0.1710	STR	1.4944	1.4373	+0.26	+22.7	-140.0
UST 3 7/8 5/09	3.875	15MAY09	USD	101*15 1/4	A101*16 1/4	-0.1360	STR	1.4058	1.3548	+0.212	+14.9	-148.4
UST 4 7/8 5/09	4.875	31MAY09	USD	102*06 1/4	A102*07 1/4	-0.1060	STR	1.4278	1.3803	+0.147	+17.1	-146.2
UST 4 6/09	4	15JUN09	USD	101*25 1/4	A101*26 1/4	-0.0510	STR	1.3505	1.3057	+0.063	+9.4	-154.0
UST 4 7/8 6/09	4.875	30JUN09	USD	102*16 1/4	A102*17 1/4	-0.0820	STR	1.3987	1.3567	+0.098	+14.2	-149.1
UST 3 5/8 7/09	3.625	15JUL09	USD	101*20 1/4	A101*21 1/4	-0.1170	STR	1.4742	1.4341	+0.143	+16.7	-141.6
UST 4 5/8 7/09	4.625	31JUL09	USD	102*19 1/4	A102*20 1/4	-0.1410	STR	1.3873	1.3485	+0.16	+8.6	-154.2
UST 4 7/8 8/09	4.875	15AUG09	USD	102*27 1/4	A102*27 1/4	-0.1210	STR	1.4883	1.4883	+0.129	+17.3	-140.4
UST 3 1/2 8/09	3.5	15AUG09	USD	101*21 1/4	A101*22 1/4	-0.1450	STR	1.5420	1.5047	+0.163	+22.7	-135.0
UST 6 8/09	6	15AUG09	USD	103*23 1/4	A103*24 1/4	-0.1490	STR	1.5605	1.5249	+0.157	+24.5	-138.0

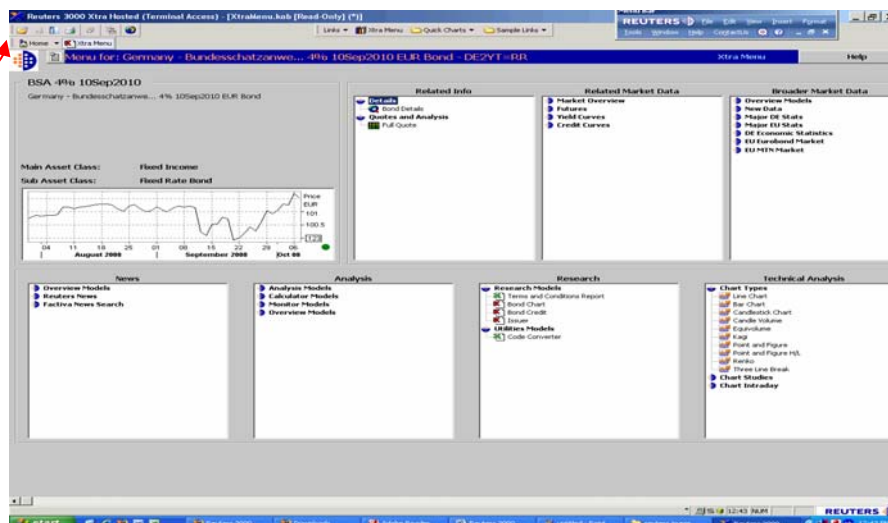
5. click on + sign to go back to list of bond screen



6. To view in detail go to Main page and click on **GO** next to **Xtra Menu**



Home



7. Click on **Home** to go back to main page.

Some important Icons



Shows a news on searched topic



Shows a display of top movers for the index in a pop up window



Shows a relevant quote in a pop up window



Shows a web browser with the relevant content