

Edgar-Pro (I-Metrix)

Edgar-Pro is a database of company filings with the Securities and Exchange Commission (SEC). These filings include IPO registration statements, annual reports (10-K), quarterly reports (10-Q), proxy statements, 8-K, etc. These reports can be downloaded. I-Metrix is an interface that helps screen data from Edgar-Pro and create reports. These reports can be exported to Excel or the extraction can be through I-Metrix Excel add-in the opens through excel.

To access Edgar-Pro, click on Start, All Programs, Financial Center Software, I-Metrix. You can also go to the website <http://i-metrix.edgar-online.com/> and access Edgar-Pro online. It is password protected, so enter login ID and password.

The screenshot shows the I-Metrix Dashboard interface. The top navigation bar includes links for Dashboard, Today, Company, Industry, Search, Screener, Analytics, and File in XBRL. The main content area is divided into four sections, each with a table of filings:

- Today's Annual Reports:** Lists filings such as 10KSB/A for CHINA RUITAI INTERNATIONAL HOLDINGS CO., LTD. and 10-K for SCRAP CHINA CORP.
- Today's Proxy Statements:** Lists filings such as PREM14A for RIDGEWOOD ELECTRIC POWER TRUST V and PRE 14A for SIERRA PACIFIC RESOURCES /N/.
- Today's Quarterly Reports:** Lists filings such as 10-Q for STAR BUFFET INC. and 10-Q/A for TREE.COM, INC.
- Today's Current Event (8-K) Filings:** Lists filings such as 8-K for BIOMIMETIC THERAPEUTICS, INC. and 8-K for LIGHTPATH TECHNOLOGIES INC.

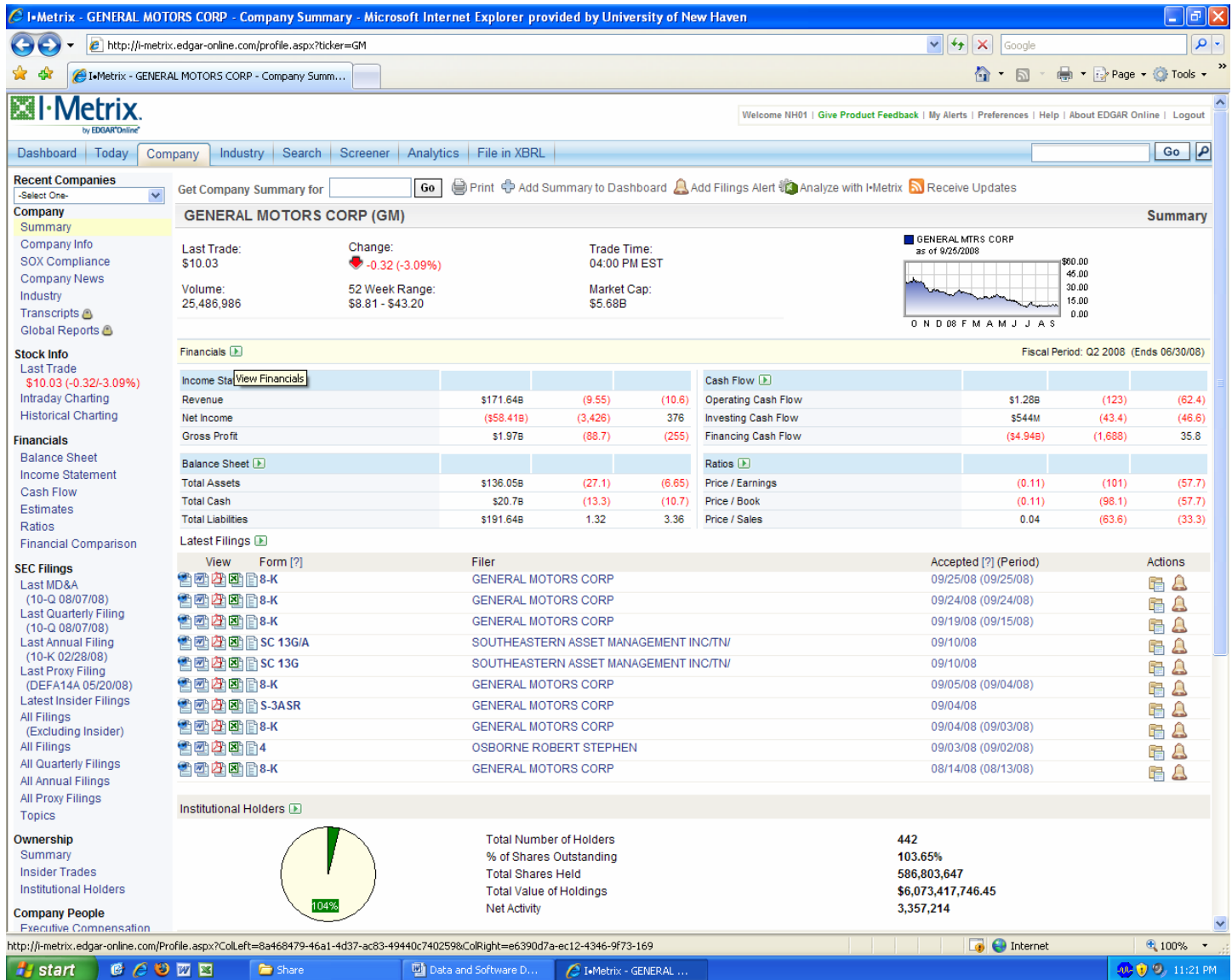
Each table includes columns for 'View' (with icons for downloading or viewing), 'Form', 'Company (Filer)', 'Accepted (Period)', and 'Actions'. Red circles in the image highlight the section headers and the 'View' column icons.

© 1995-2008 EDGAR Online, Inc. All rights reserved • NASDAQ: EDGR • Solutions for Corporations • Terms of Use • Privacy Statement

Click on any of the reports under the day's dashboard to open and download.

You can also click on Company from the top menu items. Type the ticker symbol of the company you want and click Search. You will see latest reports by the company, company financial highlights, news items, etc.

Browse and open the report of your choice in the format of your choice (html, word, pdf, excel or original format). The following screen shot shows list of reports and highlights for General Motors.



Click on the list of choices on the left and explore more.

You can also screen companies based on some financial criteria and create report. Click on Screener, click Begin Screen, select criteria from the list and repeat as necessary for multiple criteria, and click Display Query results. These can be exported to Excel. See sample screening below.

I-Metrix - Screener - Microsoft Internet Explorer provided by University of New Haven

http://i-metrix.edgar-online.com/FinancialScreener.aspx

Welcome NH01 | Give Product Feedback | My Alerts | Preferences | Help | About EDGAR Online | Logout

Dashboard Today Company Industry Search Screener Analytics File in XBRL

Screener Switch to Advanced Screener New Open Presets Save Delete Export

New Query 1

Data Item	Operator	Criteria	Matches	Total
Assets TTM	>	500000000	3950	3950
Profit Margin TTM	>	20%	1472	757
Annual Revenue Growth TTM	>	30%	2152	149
Current Ratio TTM	>	1	6350	63

Add Data Item Clear

Results (63)

Ticker	Company Name	Assets TTM	Profit Margin TTM	Annual Revenue Growth TTM	Current Ratio TTM
AEM	AGNICO EAGLE MINES LTD	2,735,498,000.00	.32	2.41	4.51
ACL	ALCON INC	7,015,600,000.00	.28	.64	1.69
APA	APACHE CORP	31,877,159,000.00	.33	.45	1.01
ARA	ARACRUZ CELLULOSE S A	4,624,863,000.00	.22	.52	3.82
ARD	ARENA RESOURCES INC	508,175,442.00	.38	1.32	4.18
ATW	ATWOOD OCEANICS INC	1,028,046,000.00	.40	.34	5.67
CIK:0001116094	AXCAN PHARMA INC	832,611,000.00	.20	.95	3.84
BHP	BHP BILLITON LTD	58,168,000,000.00	.28	2.10	1.08
BBL	BHP BILLITON PLC	58,168,000,000.00	.28	2.10	1.08
CIK:0001325098	BIRD ACQUISITION CORP.	1,229,230,000.00	.23	1.29	1.12
BDE	BOIS D ARC ENERGY, INC.	1,006,340,000.00	.28	.50	1.05
CIK:0000833320	BURLINGTON RESOURCES INC	19,225,000,000.00	.36	.35	2.42
CF	CF INDUSTRIES HOLDINGS, INC.	2,767,300,000.00	.21	.45	1.94

© 1995-2008 EDGAR Online, Inc. All rights reserved • NASDAQ: EDGR • Solutions for Corporations • Terms of Use • Privacy Statement

Done

start Data and Software D... I-Metrix - Screener - ... 11:26 PM

Screening criteria

Result Export to excel by clicking